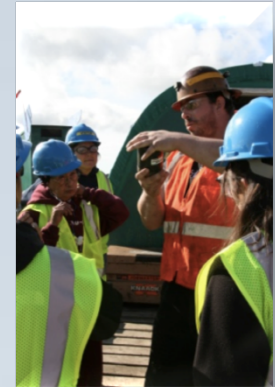


Alaska's Pebble Prospect

Resource Development Council

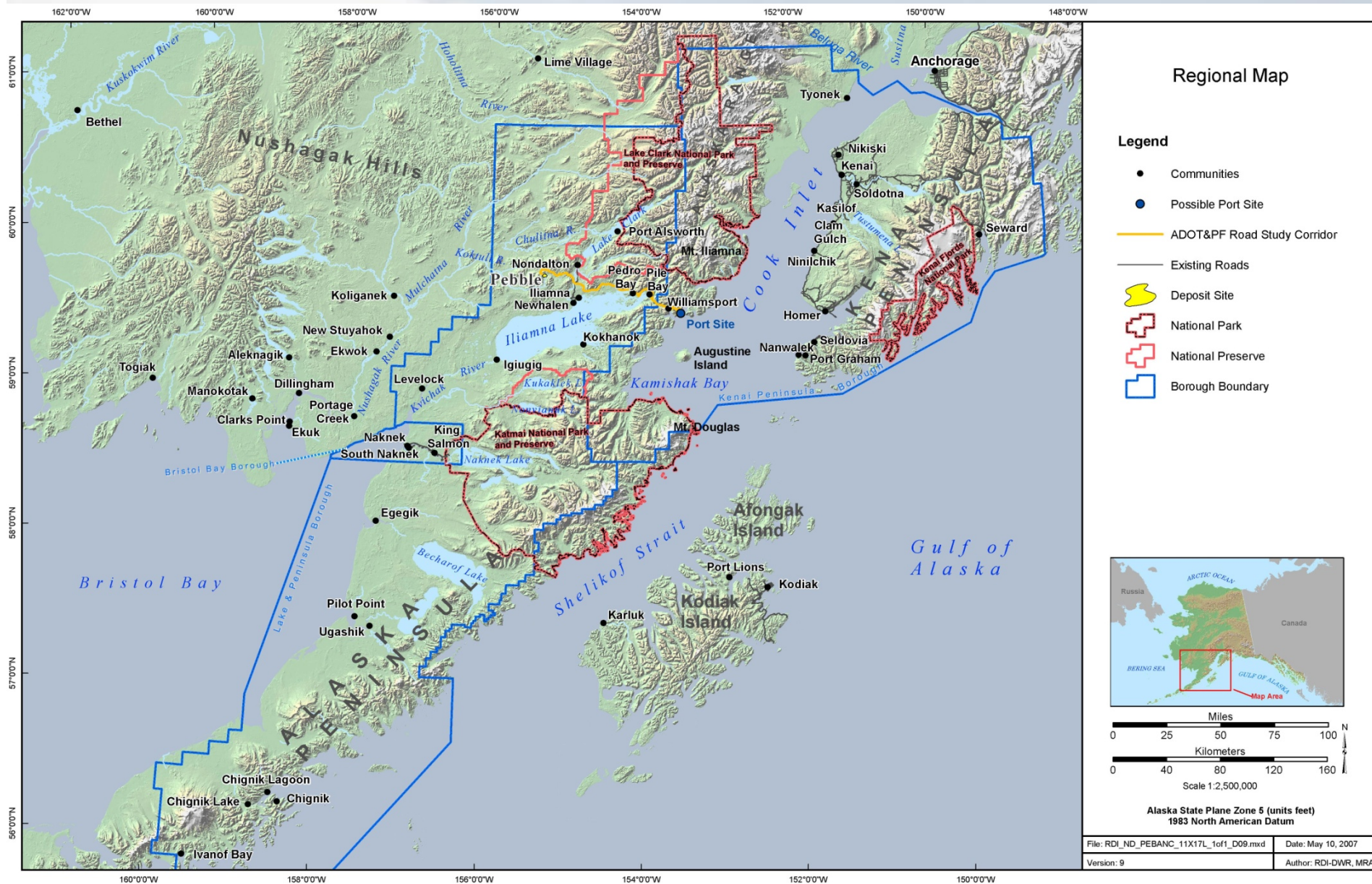
November 15, 2012
Mike Heatwole
The Pebble Partnership



A large black circle containing the text "PIT HAPPENS" in white, bold, sans-serif capital letters, centered within the circle.

**PIT
HAPPENS**

Prospect Location



The Pebble Project

- **Advanced exploration**
 - **Core drilling**
- **Engineering studies**
- **Extensive environmental baseline studies**



1 Million Milestone



Reclamation



08/18/2010



Caribou & Drilling

Environmental Baseline Document

- 53 chapters
- 100+ sections & appendices
- Roughly 20,000 pages
- 9,000 maps and figures
- Publically available



Region Population

Populations of Region's Villages Bristol Bay area, 2000 and 2010 **3**

Community	Year incorporated	Census 2010 population	Census 2000 population	10-year change	Percent change
Bristol Bay Borough	1962	997	1,258	-261	-21%
King Salmon	—	374	442	-68	-15%
Naknek	—	544	678	-134	-20%
South Naknek	—	79	137	-58	-42%
Dillingham Census Area	—	4,847	4,922	-75	-2%
Aleknagik	1973	219	221	-2	-1%
Clark's Point	1971	62	75	-13	-17%
Dillingham city	1963	2,329	2,466	-137	-6%
Ekwok	1974	115	130	-15	-12%
Koliganek	—	209	182	27	15%
Manokotak	1970	442	399	43	11%
New Stuyahok	1972	510	471	39	8%
Portage Creek	—	2	36	-34	-94%
Togiak	1969	817	809	8	1%
Twin Hills	—	74	69	5	7%
Lake and Peninsula Borough	1989	1,631	1,823	-192	-11%
Chignik	1983	91	79	12	15%
Chignik Lagoon	—	78	103	-25	-24%
Chignik Lake	—	73	145	-72	-50%
Egegik	1995	109	116	-7	-6%
Igiugig	—	50	53	-3	-6%
Iliamna	—	109	102	7	7%
Ivanof Bay	—	7	22	-15	-68%
Kokhanok	—	170	174	-4	-2%
Levelock	—	69	122	-53	-43%
Newhalen	1971	190	160	30	19%
Nondalton	1971	164	221	-57	-26%
Pedro Bay	—	42	50	-8	-16%
Perryville	—	113	107	6	6%
Pilot Point	1992	68	100	-32	-32%
Pope-Vannoy Landing	—	6	8	-2	-25%
Port Alsworth	—	159	104	55	53%
Port Heiden	1972	102	119	-17	-14%
Ugashik	—	0	11	-11	-100%

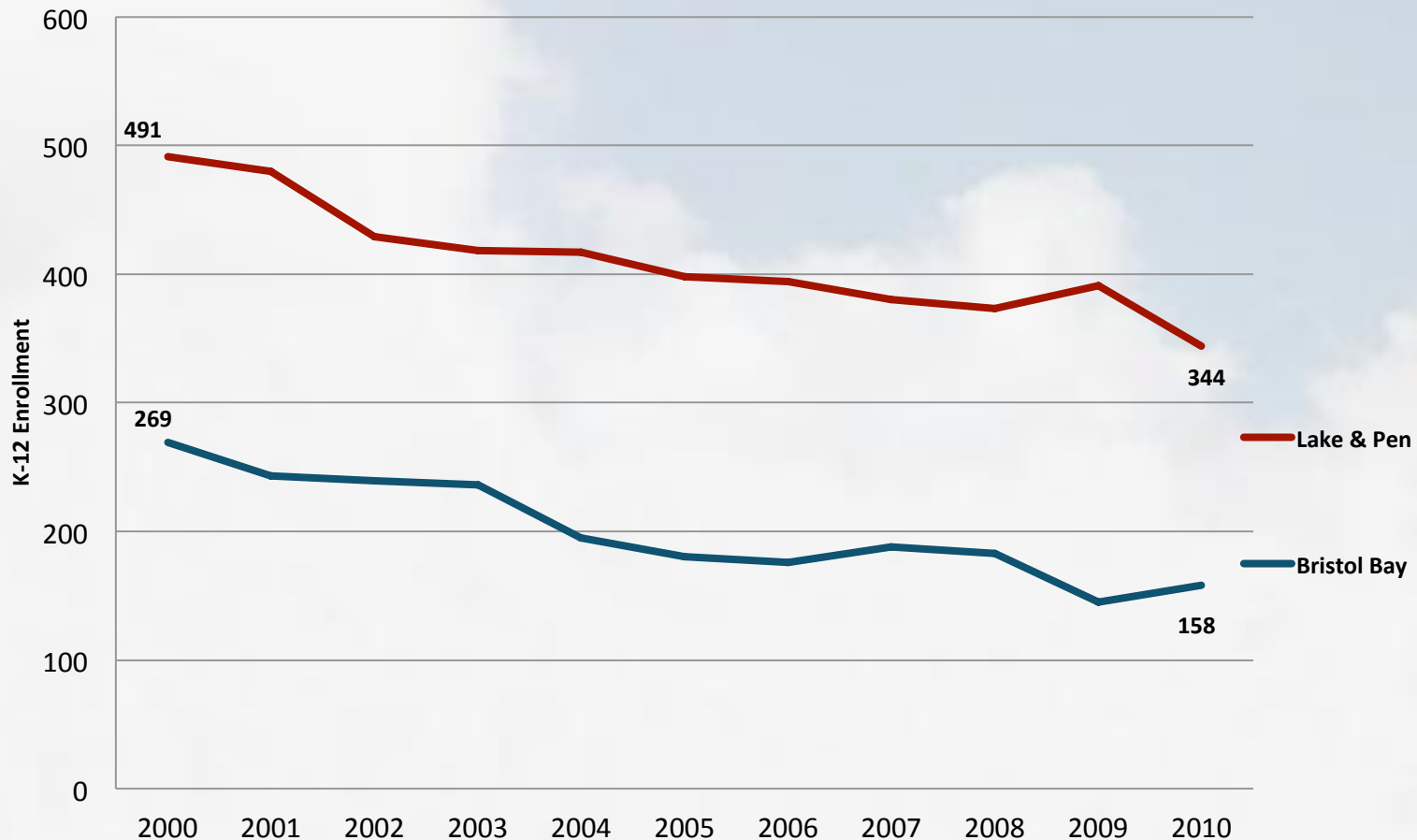
Source: Alaska Department of Labor and Workforce Development, Research and Analysis Section; United States Census Bureau

20 Communities with declining population with range of -1% to -94%

10 communities with increase in population with range of 1% to 53%

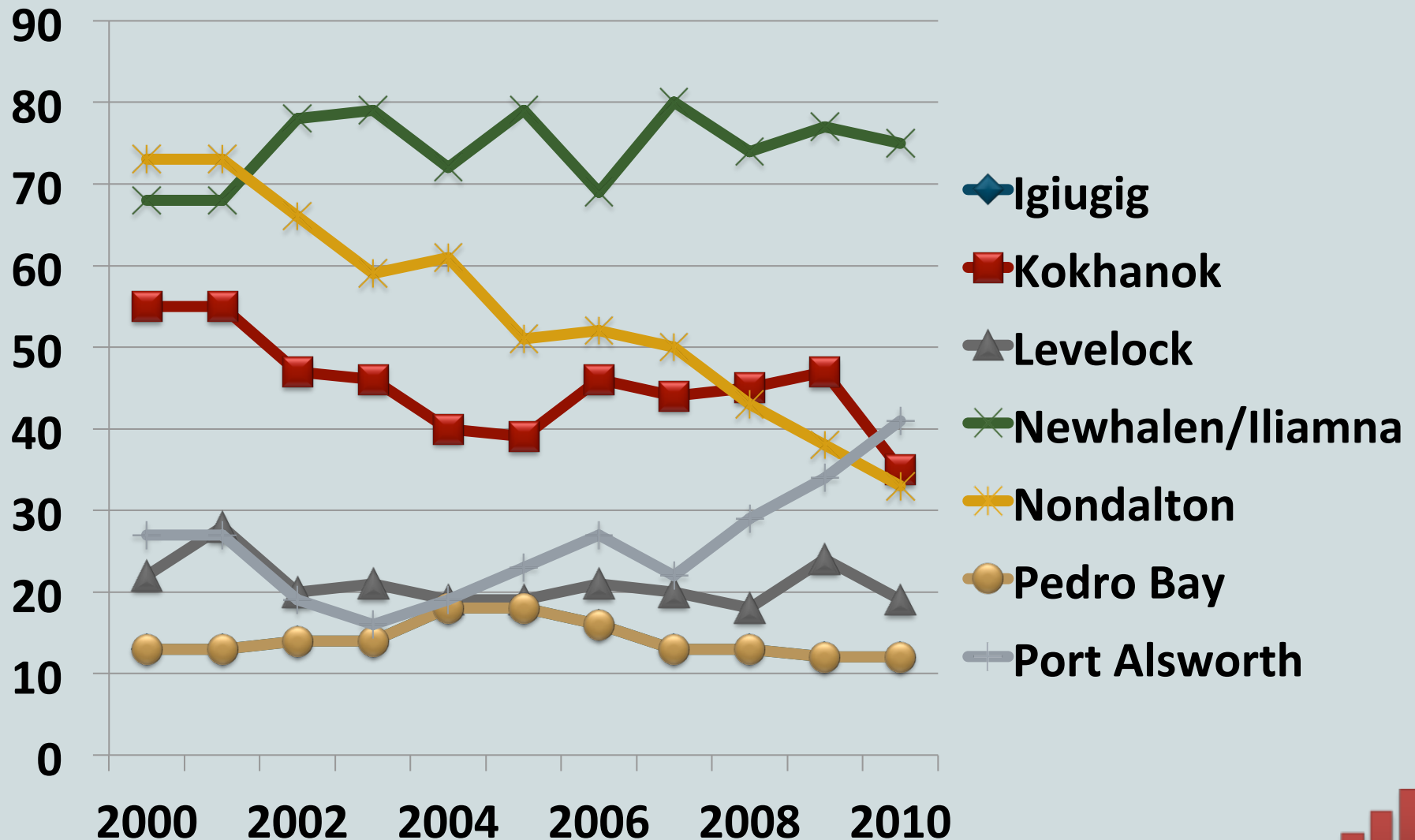
One community (Ugashik): 11 residents to 0

Region School Enrollment



Data from AK Dept. of Education & Early Development. Enrollment as of Oct. 1 each year
<http://www.eed.state.ak.us/stats/>

Demographics - Iliamna Lake/Lake Clark Communities: School Enrollment 2000-2010



Stakeholder Visions



“...subsistence way of life with jobs for our community.”

Elder Daniel Roehl
Kokhonak



“...jobs for our children and grandchildren.”

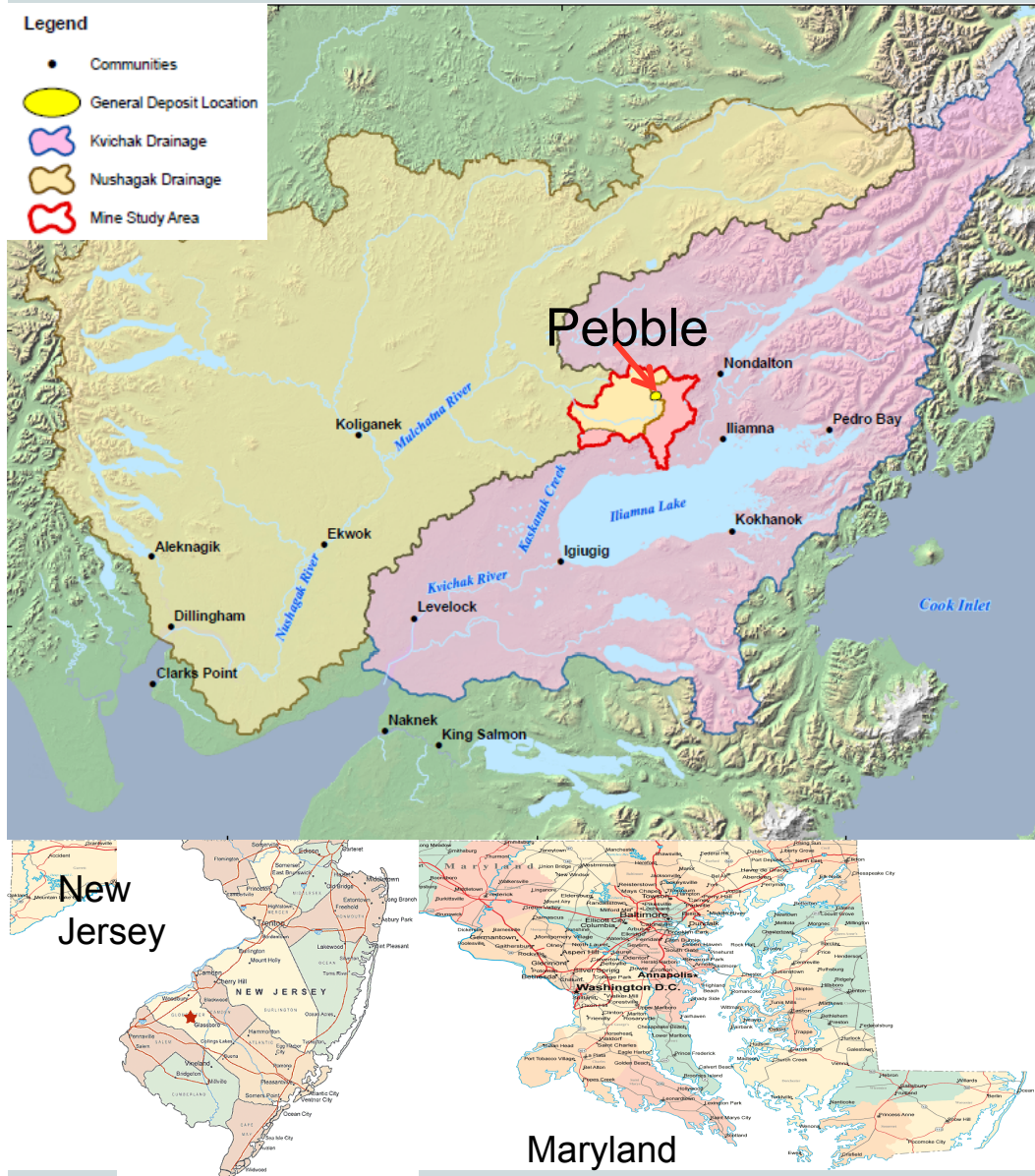
Elder Ruth Monsen
Naknek



“...help our young people with training, education and better jobs.” Elder Myrtle Anelon
Iliamna



Environmental Protection Agency



Scope Matters

Bristol Bay Region

39, 184 sq. miles = **Virginia** (42K sq. miles)

Nushagak River

12,735 mi² = **Maryland**

Kvichak River

8,017 mi² = **New Jersey**



State's Views on EPA's Actions

STATE OF ALASKA

DEPARTMENT OF LAW
OFFICE OF THE ATTORNEY GENERAL

Sean Parnell, Governor

1031 WEST 4TH AVENUE, SUITE 200
ANCHORAGE, ALASKA 99501-5903
PHONE: (907)269-5100
FAX: (907)269-5110

March 9, 2012

VIA E-MAIL TO McLerran.Dennis@epamail.epa.gov & 1ST CLASS MAIL

Mr. Dennis McLerran
Regional Administrator
EPA Region X
RA 140
1200 Sixth Avenue
Seattle, Washington 98101

Re: State of Alaska's Concerns Regarding the Environmental Protection Agency's Evolving Bristol Bay Watershed Assessment and Potential Section 404(c) Action

Dear Mr. McLerran:

The State of Alaska, and its resource agencies (Departments of Environmental Conservation (DEC), Natural Resources (DNR), and Fish and Game (ADF&G)), and the Department of Law, are increasingly concerned about the Environmental Protection Agency's (EPA's) work on the Bristol Bay Watershed Assessment. The EPA initiated the assessment to inform its decision-making on a May 2, 2010 petition asking EPA to invoke its Clean Water Act (CWA) Section 404(c) authority. The petition asks EPA to prohibit the disposal of fill in watersheds near Bristol Bay in which large mine development may occur in the future. Neither a petition process nor EPA's process for developing a response are described in the CWA or its associated regulations.

EPA's watershed assessment effort reaches well beyond any process or authority contemplated by the CWA. Physically, the assessment encompasses approximately 15 million acres of largely state-owned land – an area comparable in size to the entire state of West Virginia. Because the State has a vital interest in assuring that an action affecting natural resources and an area of this magnitude is consistent with law, I write to share the following concerns

“We believe that EPA's actions in using the watershed assessment to address the pending petition are unlawfully preemptive, premature, arbitrary, capricious, and vague.” – State of Alaska Attorney General Michael Geraghty



EPA Peer Review Report



Sen. Murkowski: EPA's Bristol Bay Watershed Assessment Still Needs Work

"I've always believed that this assessment was seriously flawed. I appreciate the work done by the reviewers, but unless the EPA fixes the fundamental flaw of evaluating an unrealistic, straw-man argument instead of waiting for an actual application to be submitted, problems will remain," Murkowski said. "Alaskans deserve a fair and unbiased environmental review of the Pebble project once a project description has been submitted. A preemptive veto by the EPA would make no more sense than a preemptive approval."