



Southeast Alaska Native Land Entitlement Finalization Act

Presentation at
Resource Development Council Breakfast

October 7, 2010





Sealaska Contribution to SE Economy – 2008 McDowell Study

- Direct employment (peak) 363
- Direct + indirect employment (peak) 490
- Direct payroll \$15 million
- Direct + indirect payroll \$21 million
- Total direct Sealaska payroll and spending in Southeast \$41 million
- Number of Southeast businesses and organizations receiving Sealaska dollars - 350
- Number of Southeast communities receiving Sealaska dollars - 16
- Dividends to Southeast shareholders \$7.9 million



Sealaska Contribution to Anchorage

- 2,000 Tribal member shareholders live in the Anchorage area
- Sealaska pays dividends to these tribal member shareholders annually; historically this has totaled some \$35 million

Sealaska Economic Contribution Statewide – ANCSA Sec. 7(i)

**\$1.6 Billion 7(i) Revenue Sharing
Reported in (\$1,000) and %
by Regional Corporation
1982 - 2009**

Sealaska Corporation
\$316,985
20%

Arctic Slope Regional Corp.
\$623,419
38%

Bristol Bay Native Corporation
\$382
0%

NANA Regional Corp.
\$369,651
23%

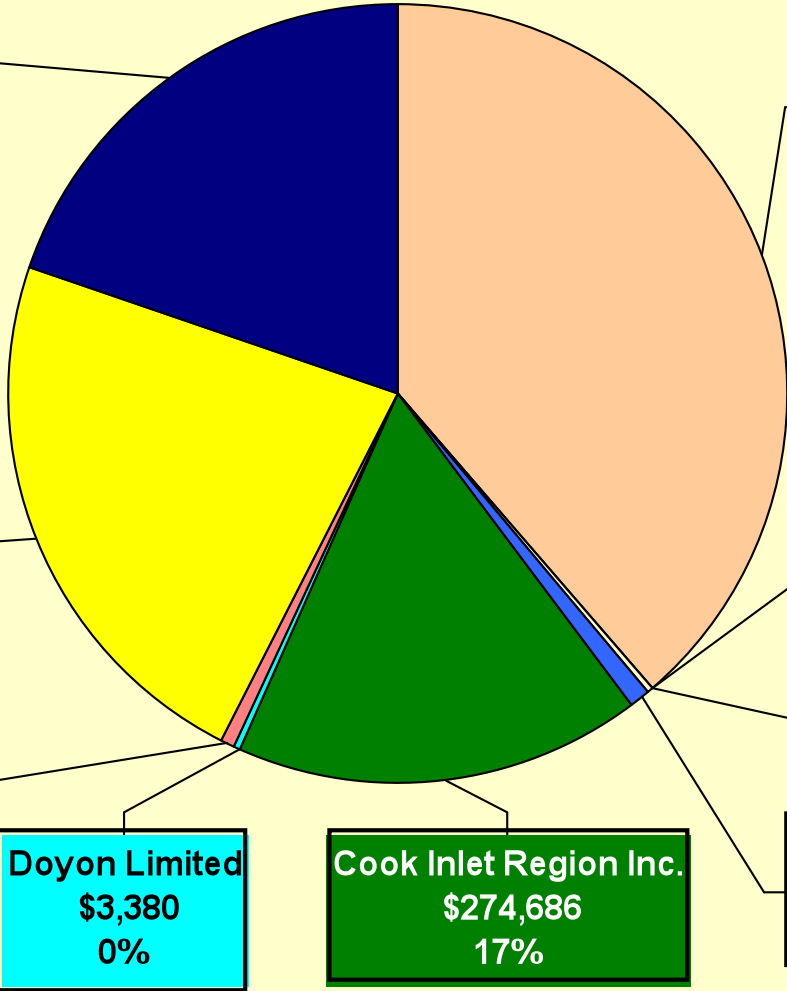
Calista Corporation
\$4,430
0%

Koniag, Inc.
\$8,947
1%

Doyon Limited
\$3,380
0%

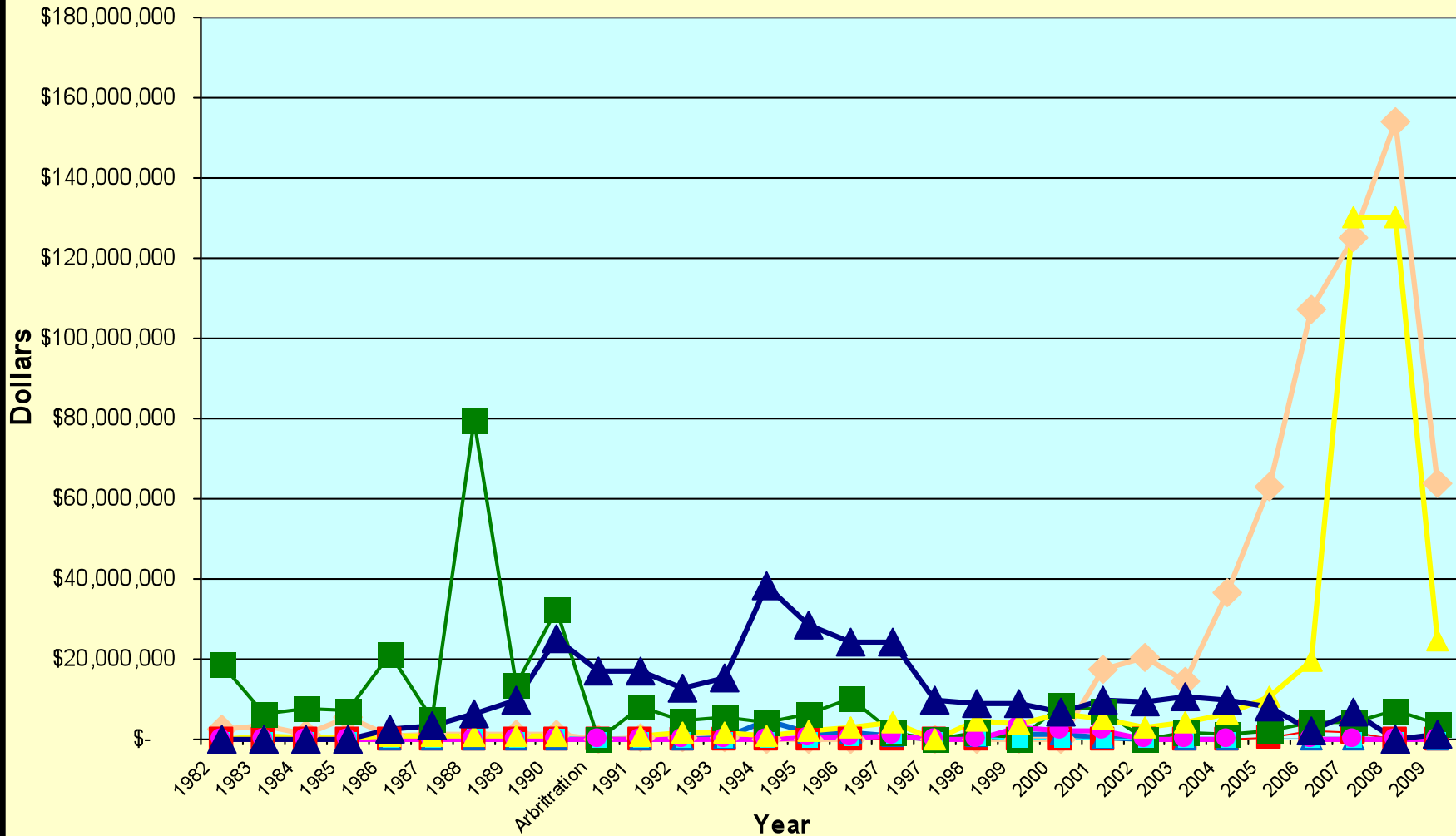
Cook Inlet Region Inc.
\$274,686
17%

Chugach Alaska Corp.
\$13,569
1%



Sealaska Annual Economic Contribution Statewide – ANCSA Sec. 7(i)

Annual \$1.6 Billion 7(i) Distribution by Regional Corporation 1982 to 2009



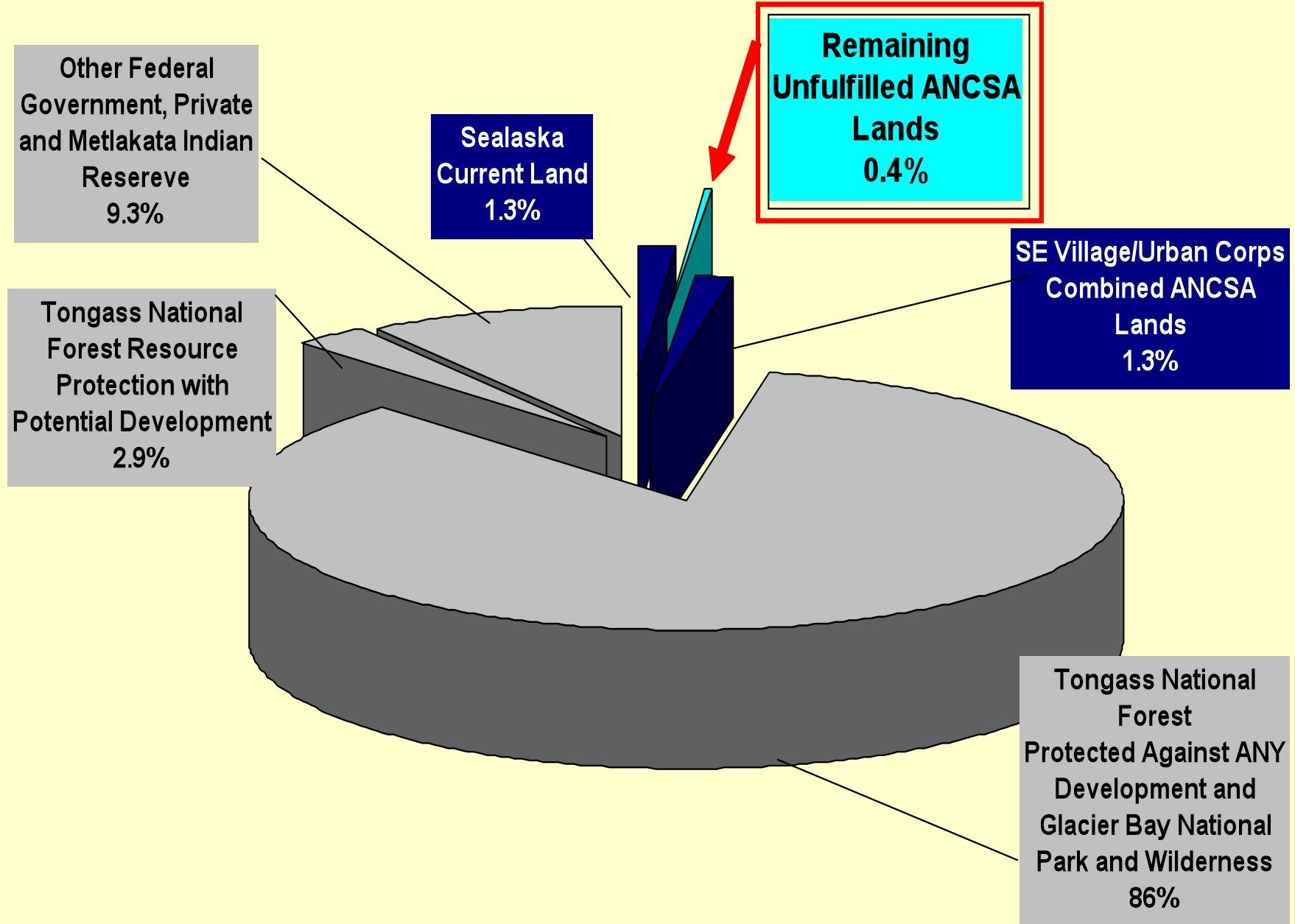
- Arctic Slope Regional Corp.
- Chugach Alaska Corp.
- NANA Regional Corp.
- Bering Straits Native Corp.
- Cook Inlet Region Inc.
- Sealaska Corporation
- Bristol Bay Native Corp.
- Doyon Limited
- Calista Corporation
- Koniag, Inc.



Back to the legislation!

How much
land
are we talking about?

Tlingit, Haida and Tsimshian 23,000,000 acre Traditional Home Area





Current Status

- **House Bill** – H.R. 2099, *Rep. Young* introduced April 2009; Seven Original Democratic cosponsors:

Abercrombie, Hawaii	Faleomavaega, American Samoa
Pierluisi, Puerto Rico	Schuler, North Carolina
Boren, Oklahoma	Kennedy, Rhode Island
Sablan, N. Mariana Is.	

* **House Hearing Held 3/17/10**

- **Senate Bill** – S. 881 *Sen. Murkowski* introduced April 2009; Four Democratic cosponsors:

Begich, Alaska	Landrieu, Louisiana
Akaka, Hawaii	Inouye, Hawaii

* **Senate Hearing Held 10/8/09**



Current Status (cont.)

- **House Bill** – No Mark-up scheduled yet, but Congressman Young still a strong supporter. Waiting to see which Committee post he will hold.
- **Senate Bill** – Mark-up post-poned several times this summer. Now on hold pending November election because Senator Murkowski has worked hard on our compromise bill. Continue to meet with other Members of Committee for support. Begich will also be key.



Why Is Legislation Necessary?

Purpose and Rationale included in Findings of Bill, that have been removed:

- There are problems with original withdrawal areas and inequitable limitations associated with each;
- Importance of continued economic opportunities in Southeast Alaska and throughout Alaska through 7(i).
- Enactment will complete 37-year land conveyance process under ANCSA; and
- Importance of securing ownership of sacred, traditional, historical sites.



Sec. 3 - Out-of-Withdrawal Selections in Southeast Alaska

- Allows Sealaska to select 75,000 to 85,000 acres of *remaining* ANCSA entitlement from outside 10 original withdrawal areas
- Selections from lands described in Section 3 (b) of Act – Timber, Other Economic Development, Sacred/Cultural
- Does not state Final Entitlement amount



Sec. 3 - Out-of-Withdrawal Selections in Southeast Alaska (Cont.)

Section 3(b)(1) – Timber Development Lands:

Authorizes the selection of timber development parcels from a pool of land shown in dark green on Attachment A of legislation.

- Mix of old growth and second-growth;
- Mostly roaded;
- Economic Development pool boundaries adjusted for local concerns.

Section 3 – Out-of-Withdrawal Selections in Southeast Alaska (Cont.)

Section 3(b)(2) – Sacred/Cultural Sites:


(A) Authorizes Sealaska to use up to 2,400 acres of remaining entitlement for sacred, cultural, traditional, historic sites, including 3 trade and migration routes.

(B) Reserves 1,200 acres of remaining entitlement for additional sites not yet identified or properly documented for significance (time limit to complete – 15 years).

** Glacier Bay Provisions Removed

** No Timber or Mineral Harvest





Section 3 – Out-of-Withdrawal Selections in Southeast Alaska (Cont.)

Section 3(b)(3) – Native Futures Sites:

Authorizes Sealaska to use up to 5,000 acres of its remaining entitlement to select up to 31 Native Futures sites.

- **Purpose** – To Diversify Economy:
 - 1) Driven by Tongass Futures Roundtable;
 - 2) Goal to create alternative economies;
 - 3) No Mineral or Timber Harvest.

Section 4: Conveyances to Sealaska

Public Access on Economic Lands:

- Road and trail easements as described on Attachment E; Section 4(d)(1)(A) and (B)
- Recognition of valid preexisting rights per Sections 14(g) & 17(b) of ANCSA; Section 4(d)(1)(c)
- Public Access for subsistence uses (consistent with ANILCA title VIII) and recreational uses; Section 4(d)(1)(D)(i)



Section 5: Miscellaneous Provisions

- No Major Revision to TLMP required.
- REMOVED - Amendment to Tribal Forest Protection Act.
- REMOVED - Amendment to National Historic Preservation Act.



Ongoing Issues:

- 1. Opposition to any timber development.**
- 2. Some disagreement about selections, despite continuous adjustment to locations.**
- 3. USFS concerns over newly developed, not yet released 5-year plan for the Tongass – they want to move into 2nd growth sustainable community initiative; therefore Sealaska should not have 2nd growth selections.**
- 4. Precedent for other Native Corporations – ANCSA has been amended many times to address inequities faced by all corporations. Moreover, Sealaska was treated differently: a) small selection areas; b) significant limitations within original selection areas; and c) no right to petition Secretary for additional withdrawals.**



LEGISLATIVE URGENCY:

- 2 Years left with existing land holdings at current rate of harvest (EOY 2010)
- 2 Years for shutdown & disengagement (EOY 2013)
- If Legislation not enacted by EOY 2010, there will be at least temporary shut down due to time needed for conveyances (1 year min.); difficult to restart industry



Major Bill Components

Out of Withdrawal Selections of:

- Sacred Sites – 3,600 acres
- Native Futures Sites – 5,000 acres
- Economic Development Lands – between 65,000 and 75,000 acres

Finalization of Entitlement

Creation of 150,000+ acres – Conservation and Habitat Area



Legislation Recap

- Sealaska has an undisputed right to receive up to 85,000 acres under ANCSA
- S. 881:
 - moves where Sealaska ANCSA selections will originate
 - protects high value public interest land (e.g. Situk River, Craig municipal watershed, etc.)
 - protects an additional 153,000 acres public interest lands
 - Provides both high wage jobs and conservation benefits."



Legislative Process and Public participation

Over 225 meetings with local communities, conservation organizations, tribes, agencies and others

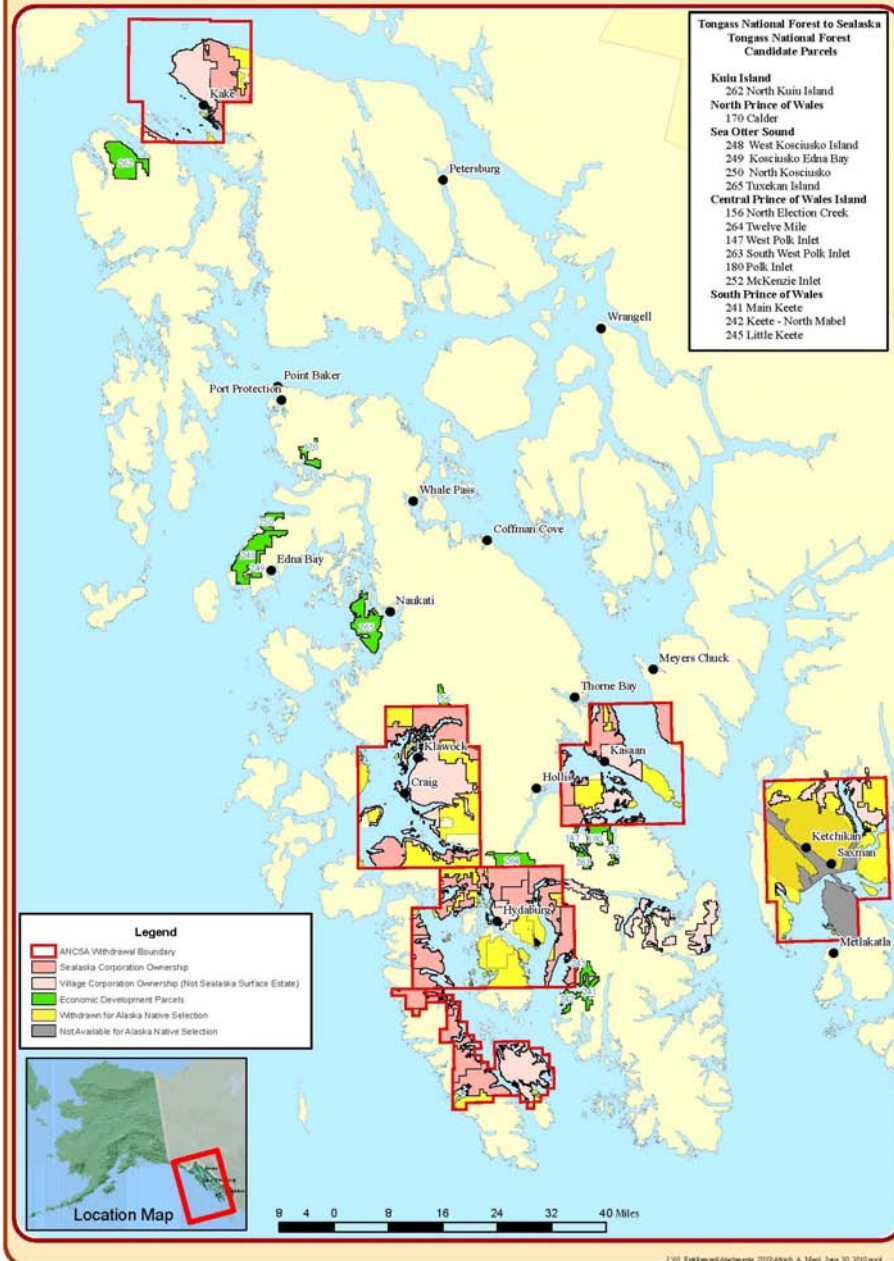
49 Letters and resolutions of support from:
Municipal Governments and Cities, Tribes and
ANCSA Village Corporations

Significant changes to the legislation

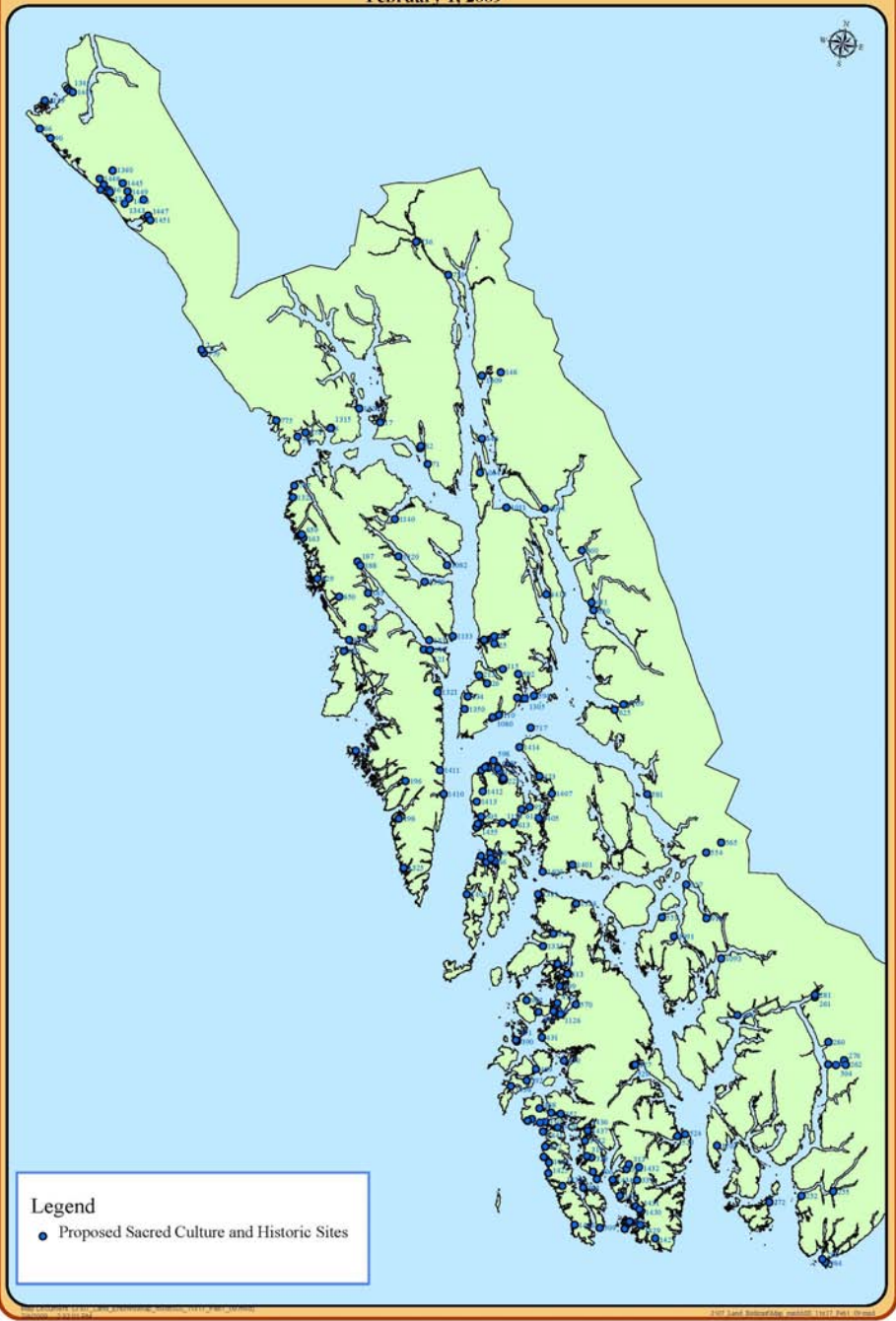


END

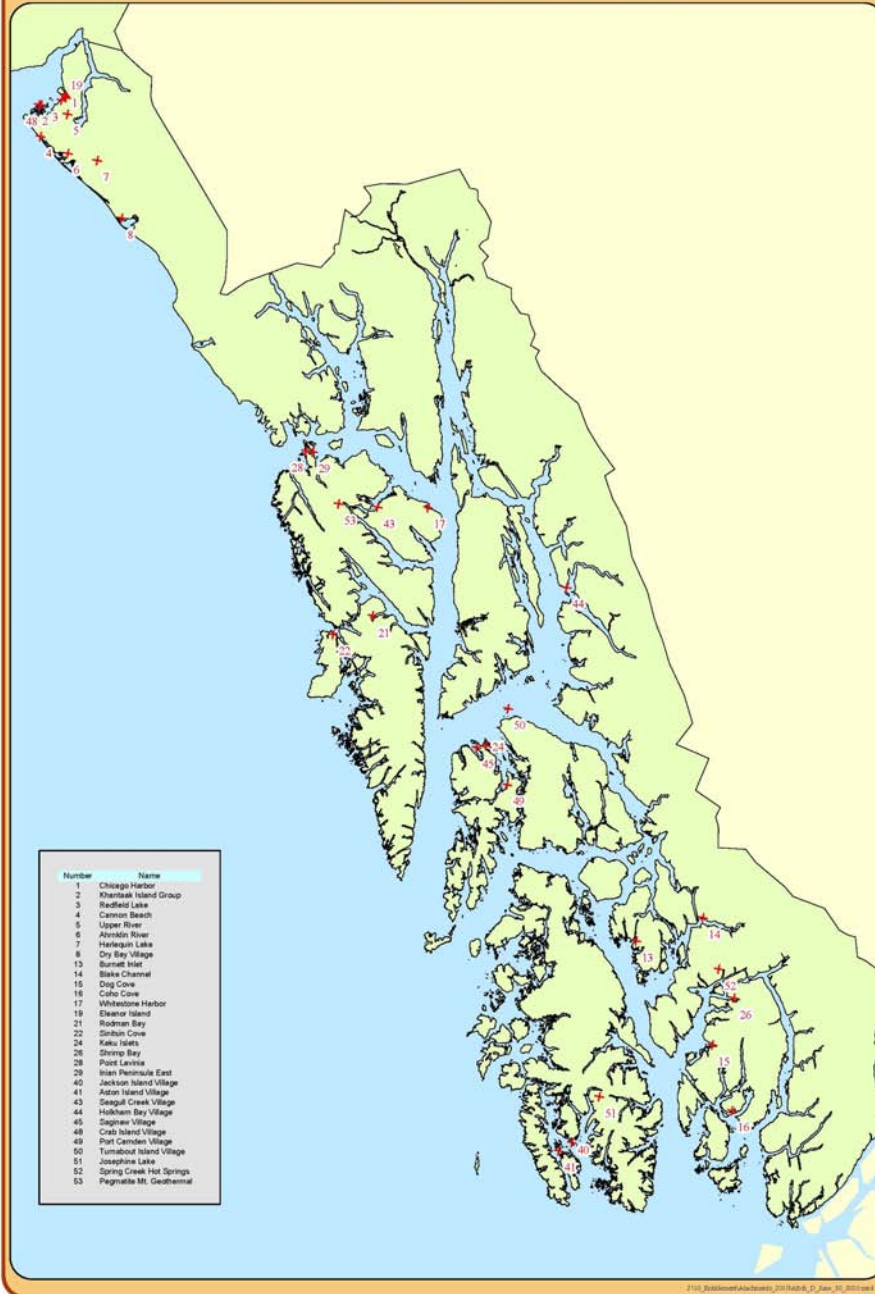
*S 881 Section 3(b)(1)(A) Attachment A (Map 1 of 2)
June 30, 2010*



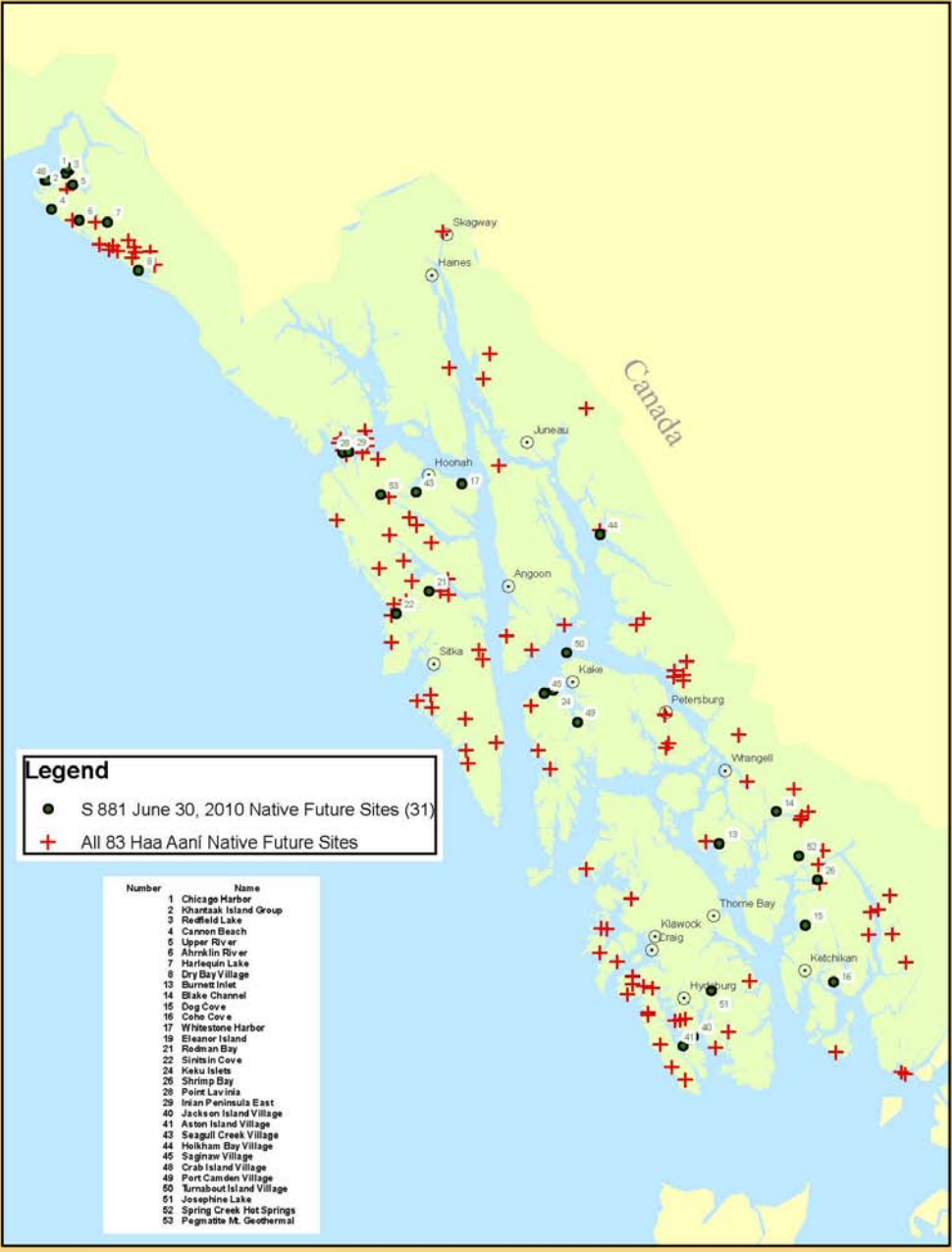
Attachment - B
Places of Sacred, Cultural, Traditional and Historic Significance
February 1, 2009



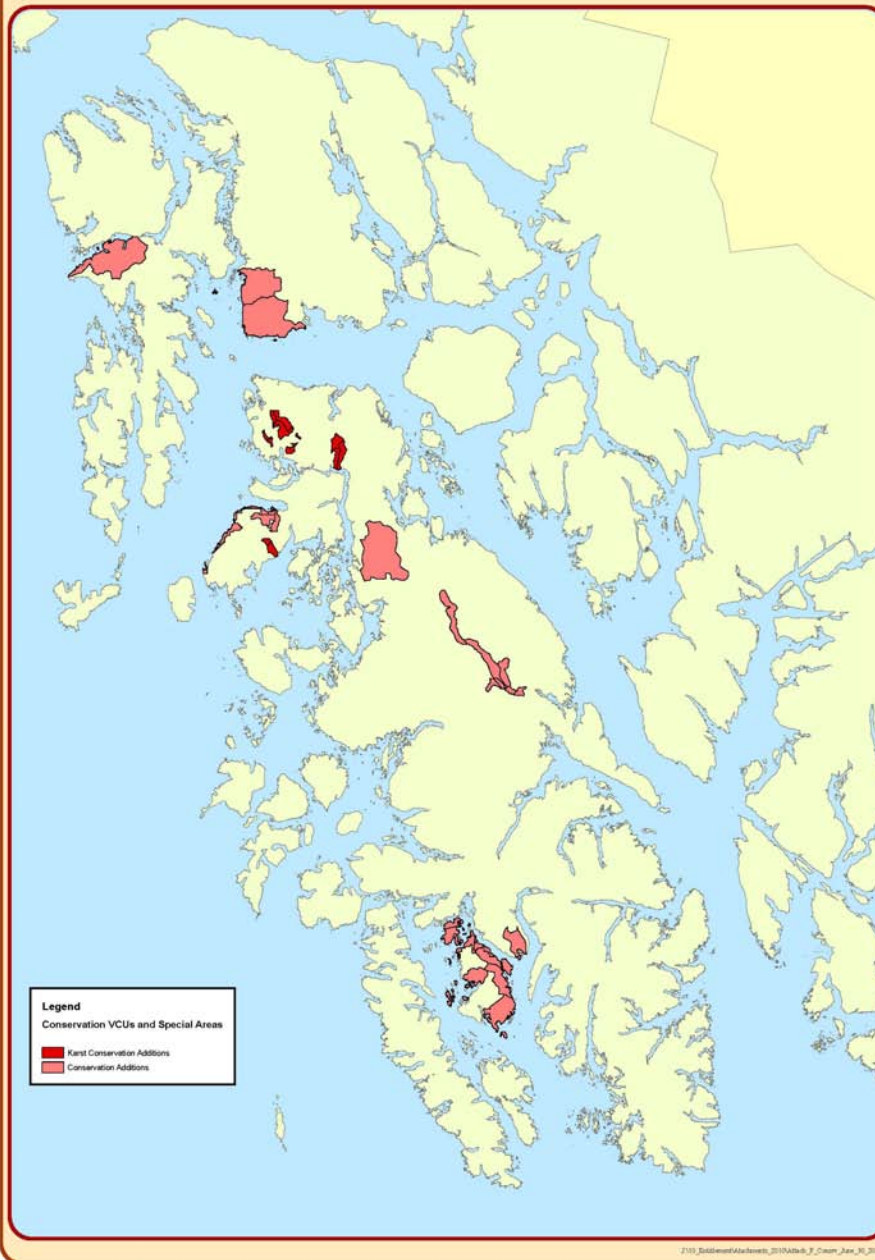
**S 881 Section 3(b)(3) Attachment - D
Native Futures Sites - June 30, 2010**



Haa Aaní Native Future Sites - June 30, 2010



*S 881 Section 7 (a) Attachment F
Conservation Areas – June 30, 2010*



Entitlement Parcels - Given up from Selection Pool

