

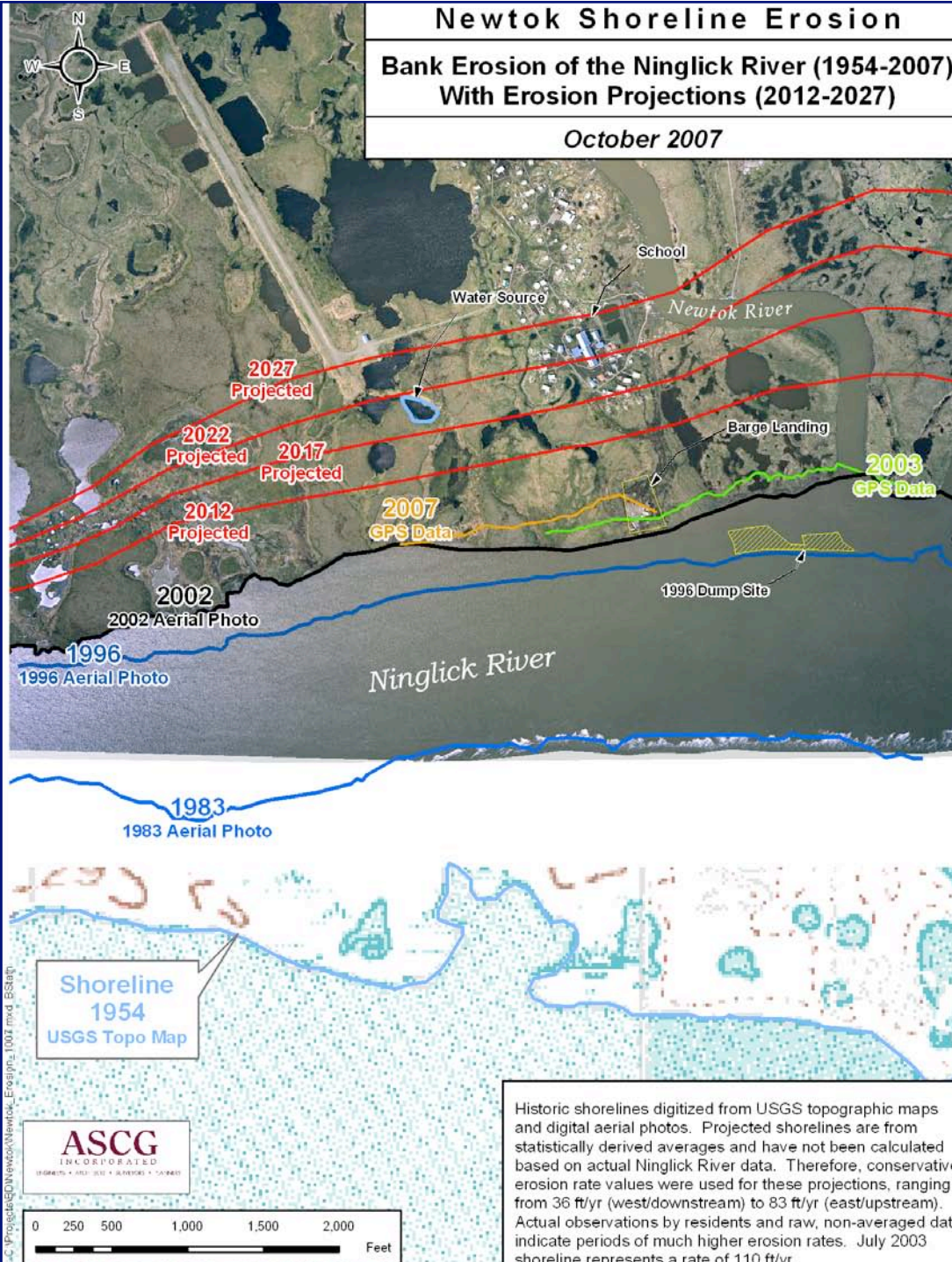


Newtok, Alaska

Newtok Shoreline Erosion

Bank Erosion of the Ninglick River (1954-2007) With Erosion Projections (2012-2027)

October 2007





Loss of land to erosion 1983-1996
River bank has eroded up to bend in river in 1996 photo

The Nature of Erosion in Newtok

Temperature changes ♦ Wave action ♦ River current

*Undercutting of
Ninglick River
bank*

Newtok soils
have high ice
content.

Summer heating
of river edge
and associated
substrate results
in loss of soil
structure due to
interstitial ice
degradation.











**Barge landing lost 2005.
No cost-effective way to deliver
building materials.**



August 2006

Landfill lost in 1996. New landfill access by boat at high tides only.



Water source threatened in next five years



Photo courtesy of Stanley Tom, September 2005



Copyright © Jennifer Payne, Alaska Division of Community Advocacy, July 2006

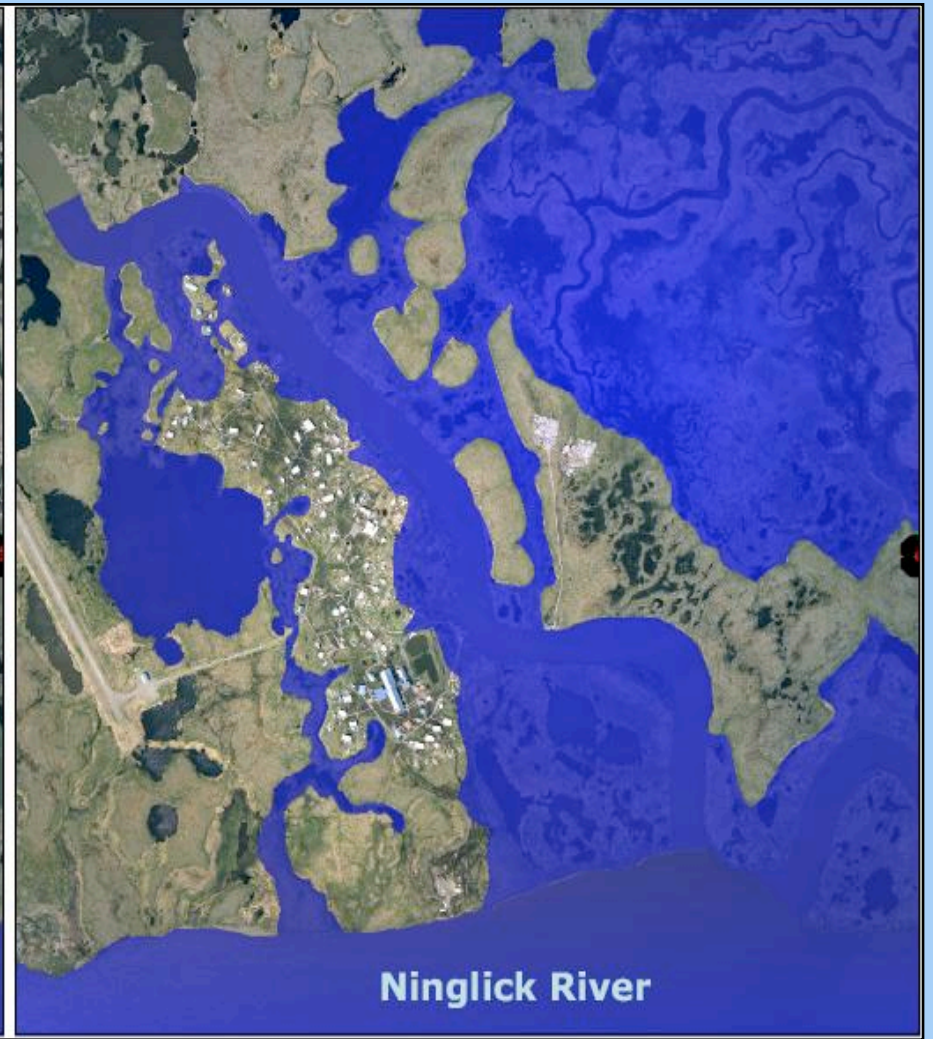
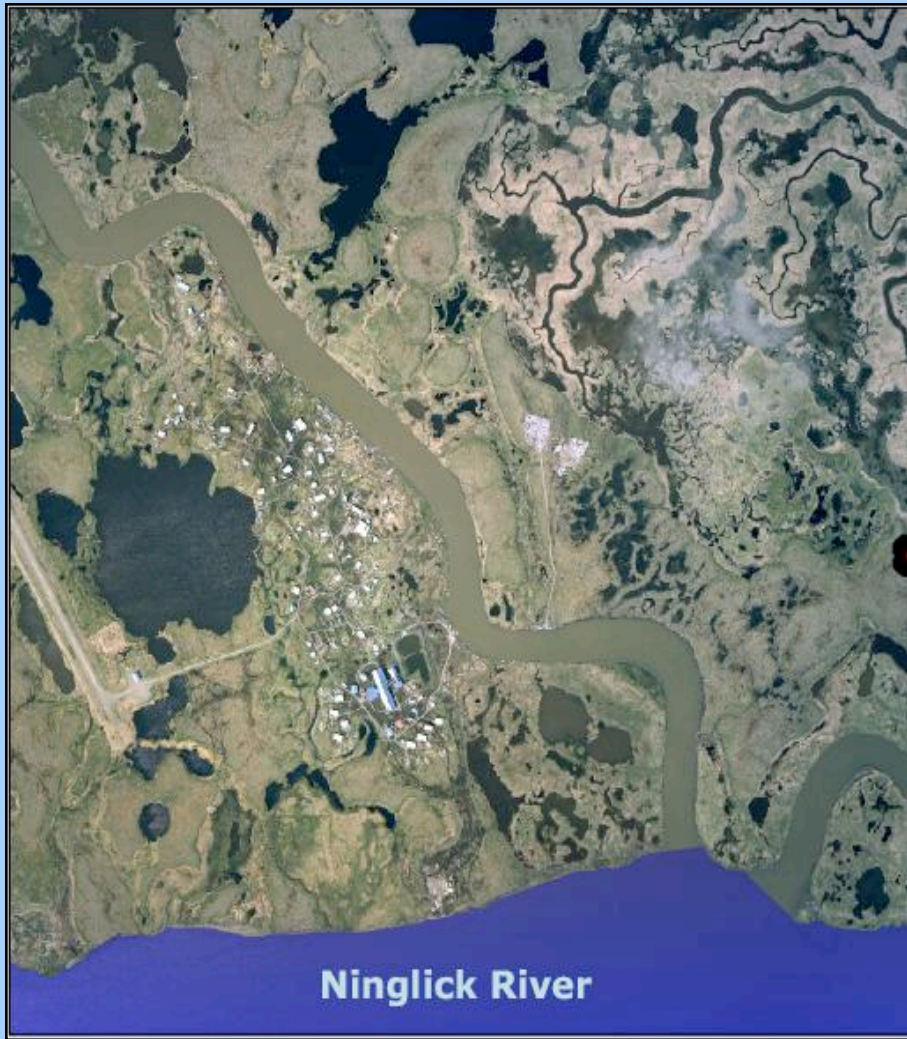


Newtok

land buffer lost

Captured bend in Newtok
River

Ninglick River



Depiction of the September 22, 2005 fall storm that sent floodwaters which completely encircled the village, effectively making it an island for several days.

February 2006 Flooding

Residents observe more frequent and more severe flooding



Difficulties delivering fuel



Fuel barge

**Fuel Barge grounded
for three days in
Newtok River
April 2006**







01/11/2005

Housing Shortage

US Army Corps
of Engineers



N



ASCG
INCORPORATED
BIRMINGHAM • HOUSTON • SAN ANTONIO • TAMPA



The Newtok Planning Group

Assisting with relocation efforts since 2006

Newtok Planning Group

[State of Alaska](#) > [Commeroe](#) > [DCRA Home](#) > [Newtok Planning Group](#)

The Newtok Planning Group was formed in May 2006 when representatives from State and Federal agencies began meeting to coordinate assistance to the village of Newtok in its relocation to the new village site of Mertarvik on Nelson Island.

[A Brief History of the Settlement of Newtok and Village Relocation Efforts](#)

Meeting Minutes/ Agendas

Menu

Newtok Planning Group Documents

Menu

Reports, Studies, Maps, and Aerial Photos

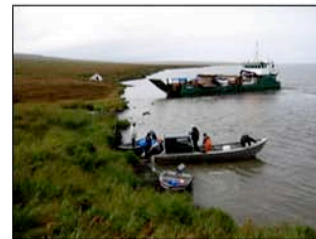
Newtok Integrated Solid Waste Plan

Field Trip Photos

August 15, 2006 Field Trip



Mertarvik Spring. In the Yup'ik language, Mertarvik means "getting water from the spring"



Barge delivery of BIA Housing Improvement Program packages to Mertarvik



Flying over Mertarvik near the spring and the temporary barge ramp

For more information, please contact:
Sally Russell Cox, Planner
Division of Community Advocacy
907 269-4588
sally.cox@alaska.gov



Quick Links...

- › [Alaska Coastal Management](#)
- › [Grants Section](#)
- › [Financial Assistance to Communities](#)
- › [Floodplain Management](#)
- › [Land Management and Mapping](#)
- › [Local Boundary Commission](#)
- › [Local Government Assistance](#)
- › [Planning and Land Management Section](#)
- › [Rural Utility Business Advisor](#)
- › [State Assessor/Property Tax Info](#)

Of Interest...

- › [Alaska Community Database](#)
- › [Alaska Economic Information System](#)
- › [Business Plans Resources](#)
- › [Calendar of Events](#)
- › [Capital Project Database](#)
- › [Community Funding Database](#)
- › [Community Maps](#)
- › [Community Photo Library](#)
- › [Economic Development Resource Guide](#)
- › [Local Government Online \(LOGON\)](#)
- › [MOD Online System](#)
- › [Plans Library](#)
- › [Publications](#)
- › [Related Links](#)

Participants in Newtok Planning Group

Native Village of Newtok

- Newtok Traditional Council (NTC)
- Newtok Native Corporation (NNC)

State

- Alaska Department of Commerce, Community, and Economic Development (DCCED), Division of Community & Regional Affairs
- Alaska Department of Environmental Conservation/Village Safe Water Program (VSW)
- Alaska Department of Transportation and Public Facilities (DOT/PF)
- Alaska Department of Military and Veterans Affairs/Division of Homeland Security and Emergency Management (DHS&EM)
- Alaska Department of Education and Early Development (DEED)
- Alaska Department of Health and Social Services (DHSS)
- Alaska Industrial Development and Export Authority (AIDEA)/Alaska Energy Authority (AEA)
- Alaska Governor's Office

Federal

- U.S. Army Corps of Engineers (USACE), Alaska District
- U.S. Department of Commerce, Economic Development Administration (EDA)
- U.S. Department of Agriculture, Rural Development
- U.S. Department of Agriculture (USDA), Natural Resources Conservation Service (NRCS)
- U.S. Department of Housing and Urban Development (HUD)
- U.S. Department of the Interior, Bureau of Indian Affairs (BIA)
- U.S. Department of Transportation, Federal Aviation Administration (FAA).
- U.S. Environmental Protection Agency (EPA)
- Denali Commission
- Senator Lisa Murkowski's Office

Regional Organizations

- Association of Village Council Presidents (AVCP), Housing Improvement Program (HIP)
- Coastal Villages Region Fund (CVRF)
- Lower Kuskokwim School District (LKSD)
- Rural Alaska Community Action Program (RurAL CAP)
- Yukon-Kuskokwim Health Corporation

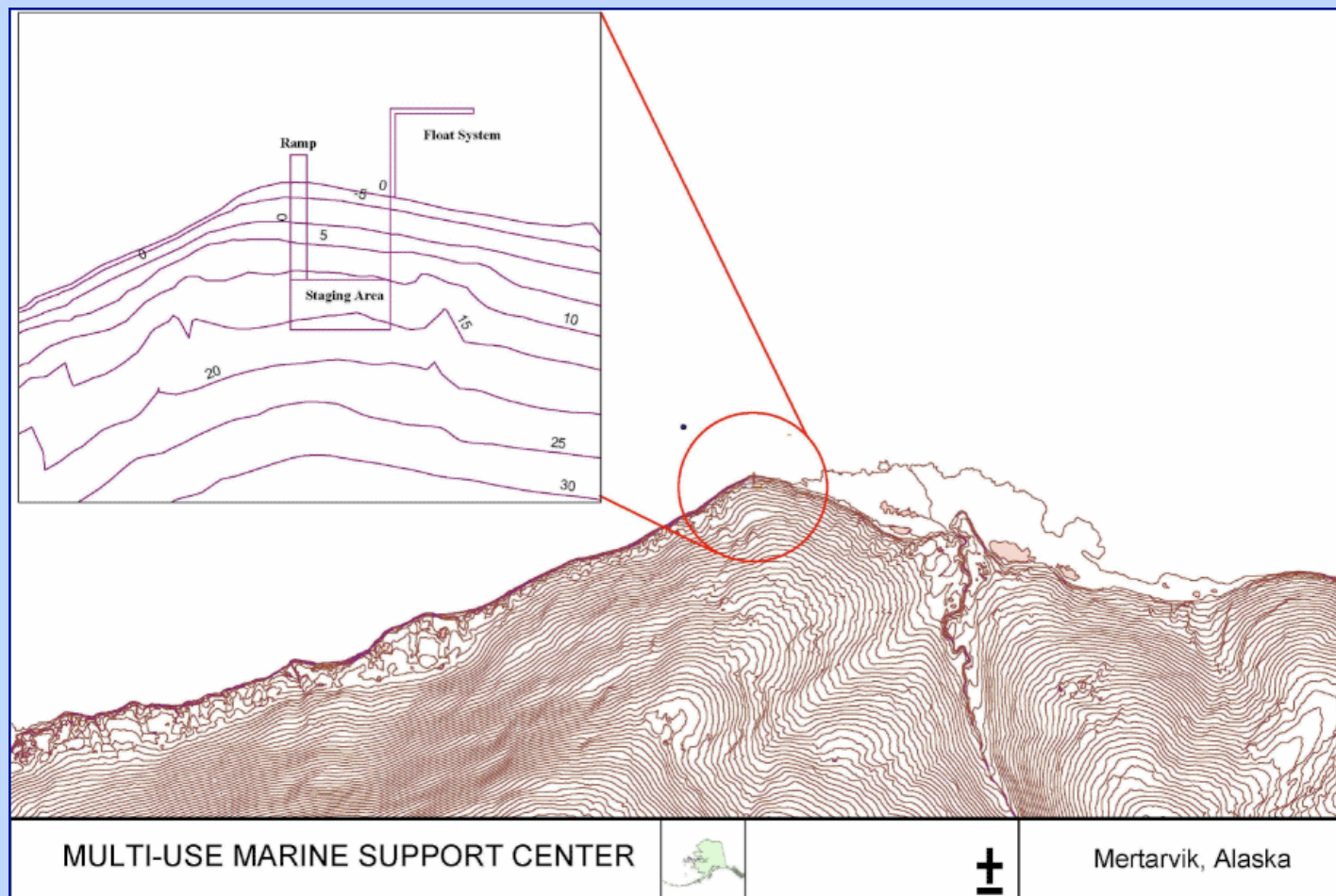
Agency Collaboration in Relocation Efforts

Economic Development Administration (EDA) Grant for Barge Landing at Mertarvik

DCCED: Grant applicant

Corps of Engineers: Assisted with environmental portion of application

DOT/PF: Provided conceptual drawings for application



DCCED: Grantee and project co-manager

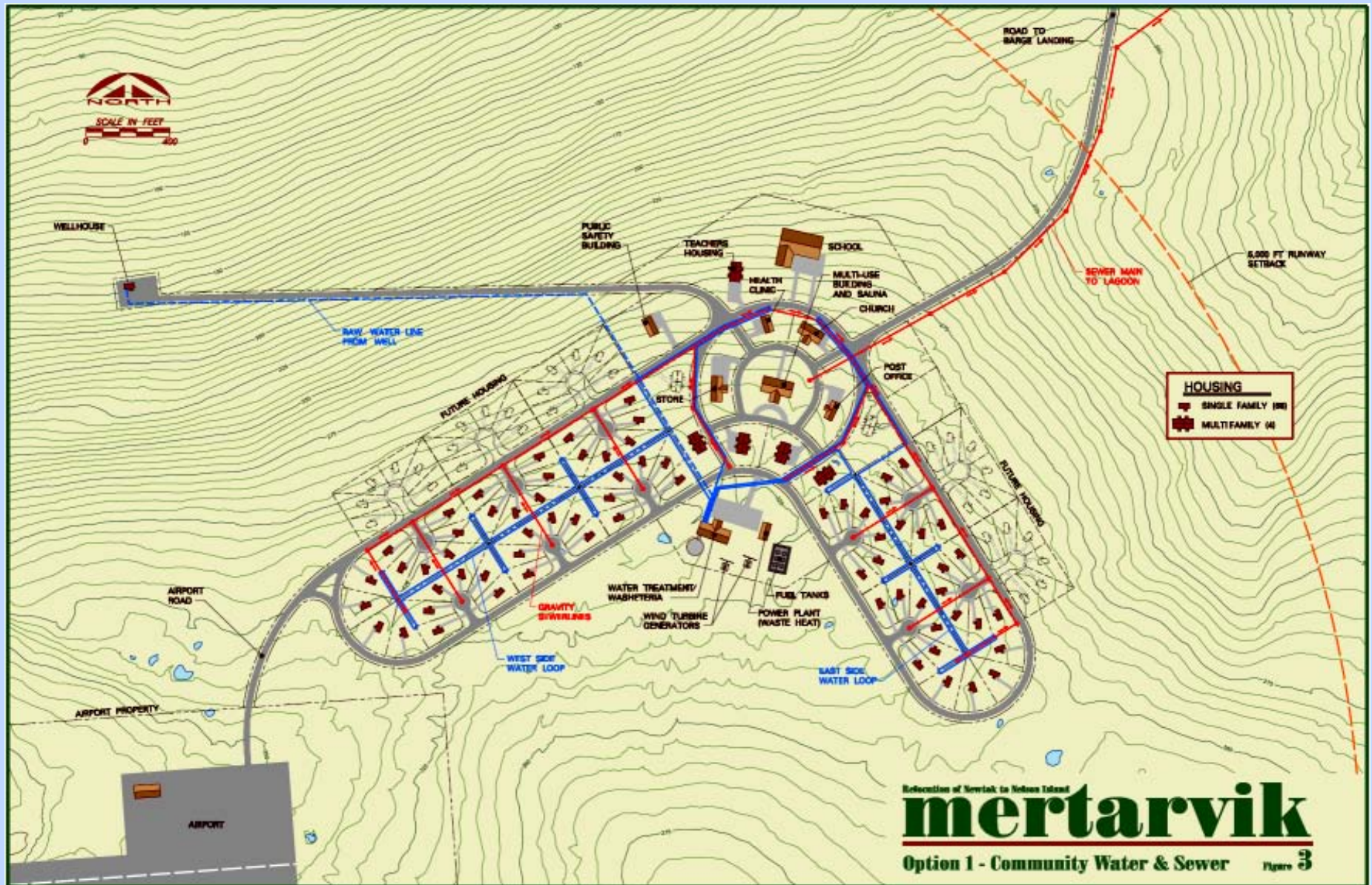
EDA: Grantor \$800,000

DOT/PF: \$200,000 State match & project co-manager

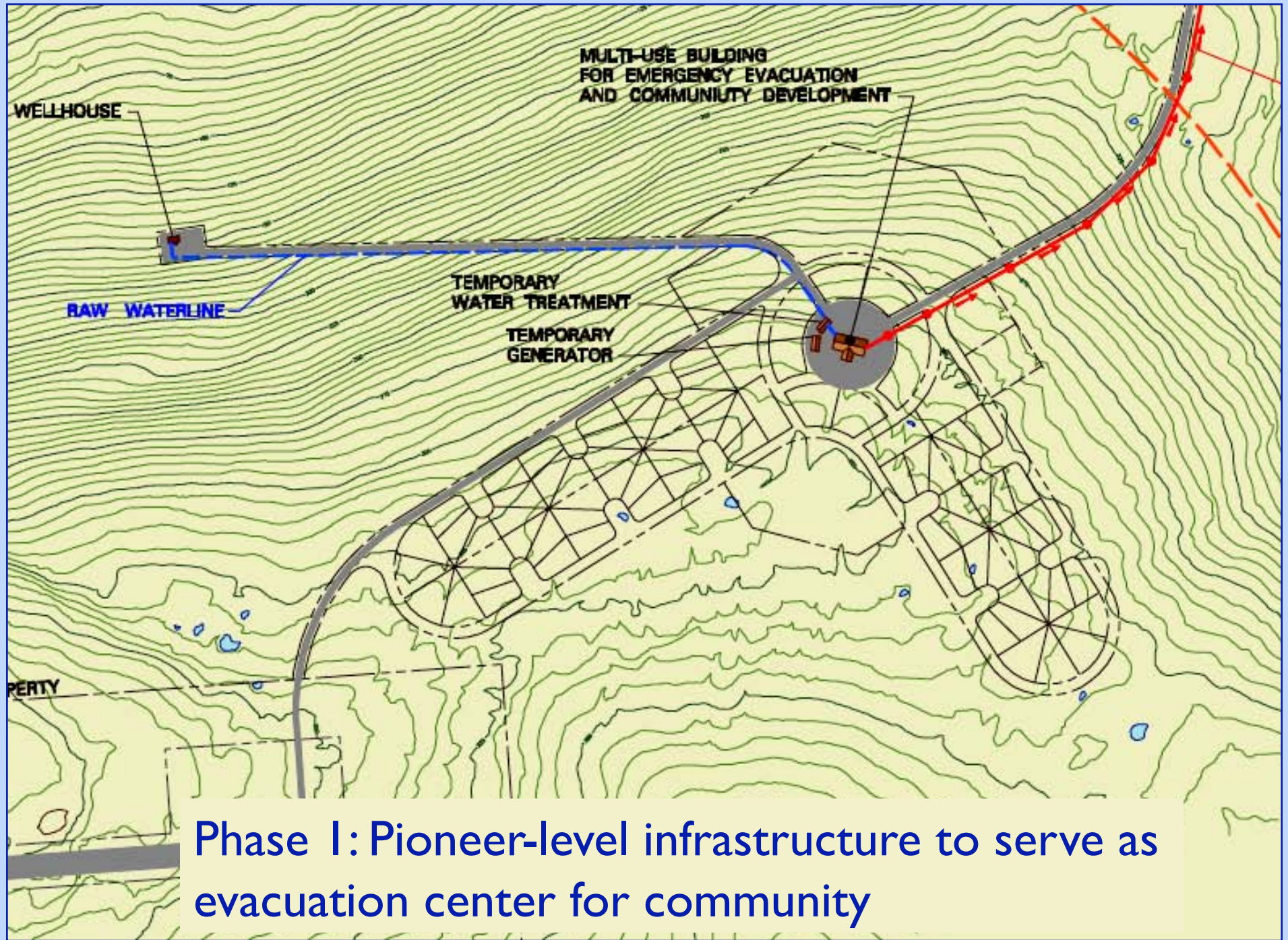


Agency Collaboration: Community Layout Plan

- Newtok Traditional Council grant applicant
- DCCED/DCRA grant administrator of Mini-Grant Program - \$30,000
- Denali Commission: funder of Mini-Grant Program
- DEC/Village Safe Water: jump-started planning effort through identification of village “foot-print” for water/ sewer purposes



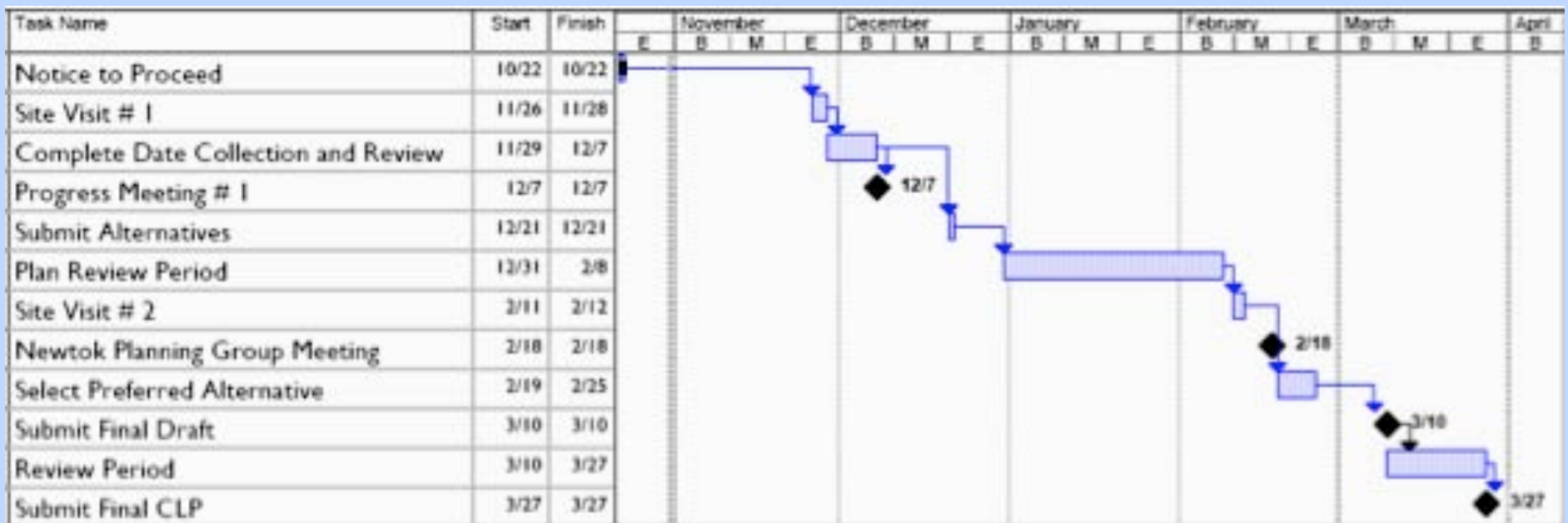
Village Safe Water prepared layout for water/sewer.



Phase I: Pioneer-level infrastructure to serve as evacuation center for community

Mertarvik Community Layout Plan

Funded by Mini-Grant administered by DCRA/funded by DC
(to be completed March 2008)

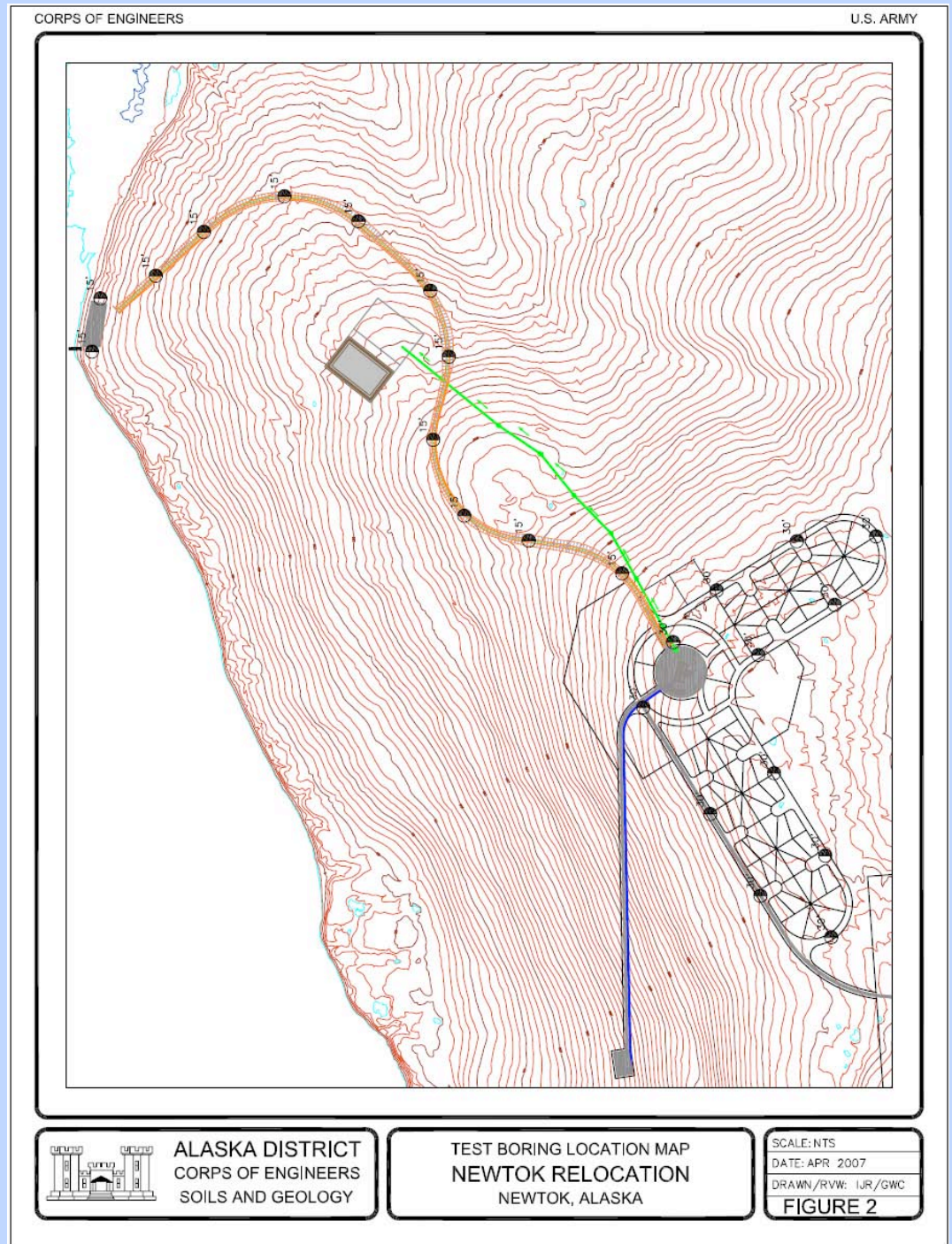


Agency Collaboration: Water/Geotechnical Investigations:

Corps of Engineers:
Geotechnical investigations
for barge landing, proposed
road to village, key areas
around village site.

VSW: Test drilling for
water well

DOT/PF: Geotechnical
investigations for preferred
airport site, wind studies





Mertarvik:
“getting water from the spring”



The barge ramp the village built to deliver housing packages to Mertarvik



The barge delivering 3 BIA HIP Homes



Taking the housing packages off the barge



Building 3 homes on Mertarvik

