

Offshore Oil and Gas Program Update

*Jeff Walker
Regional Supervisor,
Field Operations*

November 16, 2005



Alaska OCS Potential

(Risky, Undiscovered, Conventionally Recoverable)
(MMS 2000 National Assessment)

	OIL	(Billion	Barrels)	Gas	(TCF)	
	95%	Mean	5%	95%	Mean	5%
<u>Alaska OCS Total</u>	<u>17</u>	<u>25</u>	<u>35</u>	<u>55</u>	<u>123</u>	<u>227</u>
Chukchi	9	15	25	14	60	154
Beaufort	4	7	12	13	32	63
Hope	0	0.1	0.3	0	3	11
Norton	0	0.05	0.2	0	3	9
Cook Inlet	0.3	0.8	1.4	0.7	1.4	2.5
N.Aleutian (2005)	0	0.8	2.5	0.4	9	23



MMS Background: An Ocean & Mineral Agency

- **The Outer Continental Shelf**
 - off the coast beyond 3 miles
- **Oil and Gas Leasing, Regulation, Monitoring, Inspections**
- **Sand, gravel, gold, and other minerals,**
- **Energy from wind, currents, waves**
- **Royalty Collection and Disbursement**



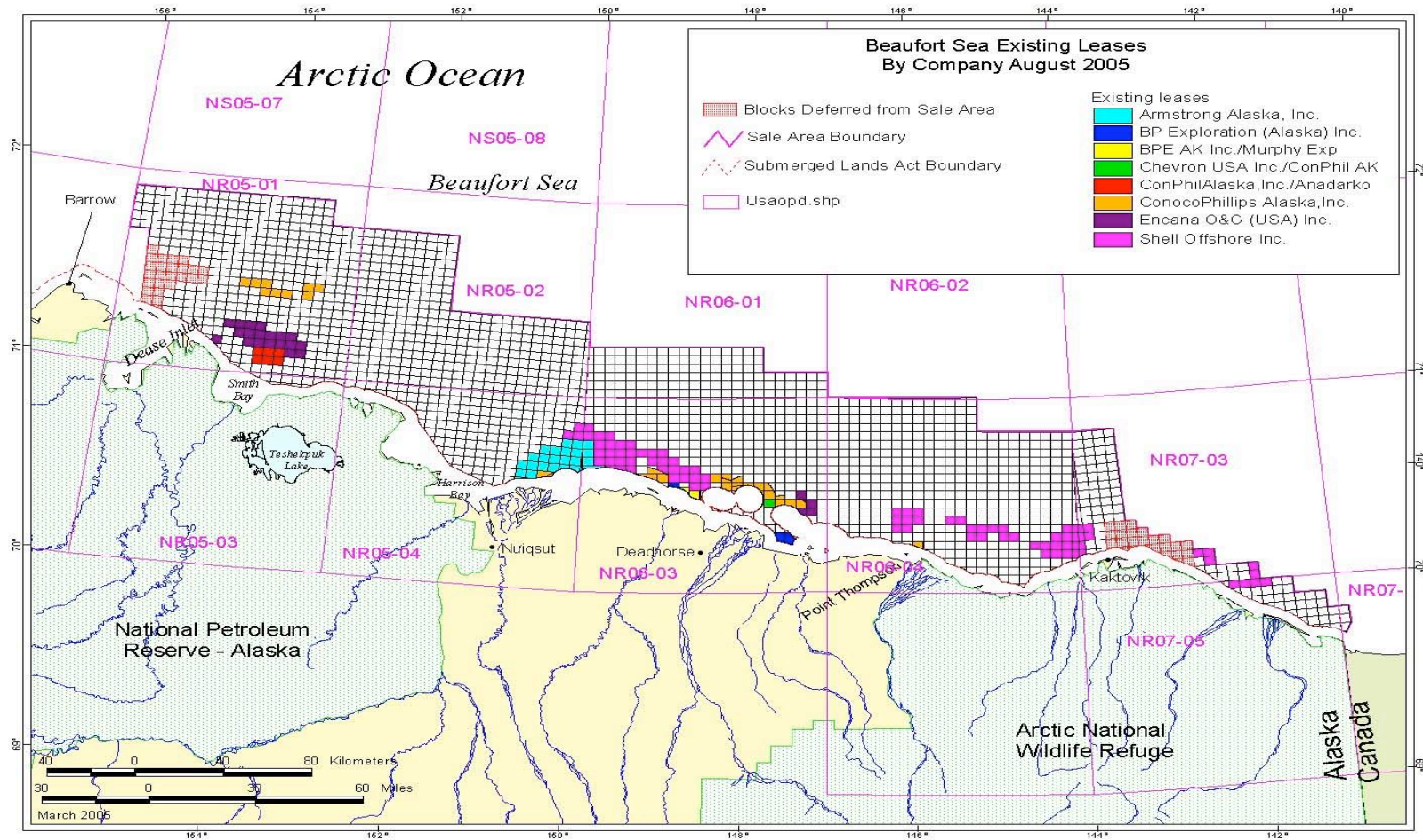
- **Environmental & Technical Research**

DOI Alaska Goals

- Increase Access to Prospective Lands
- Ensure Clarity of the Permitting Regimes
- Consider Reasonable Incentives Offshore

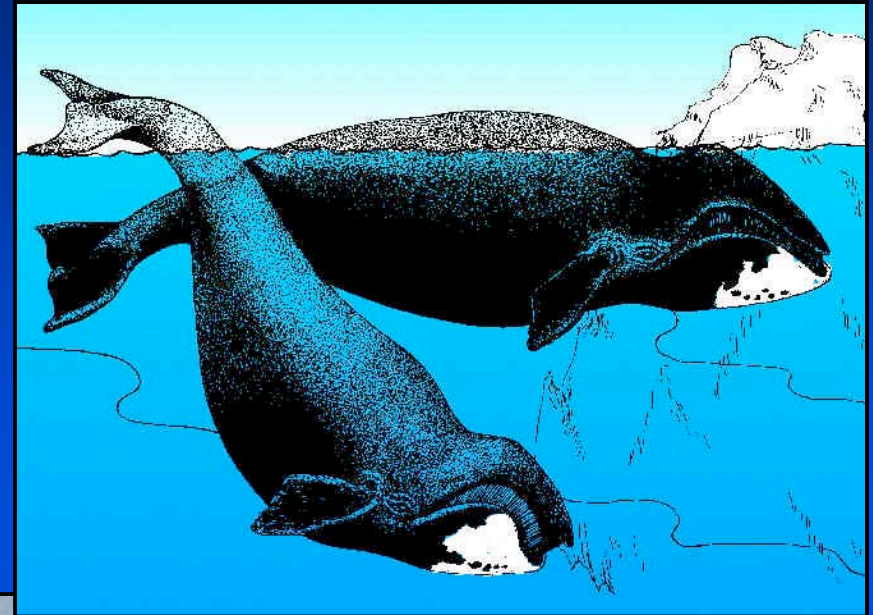


Beaufort Sea – Sales 186 and 195



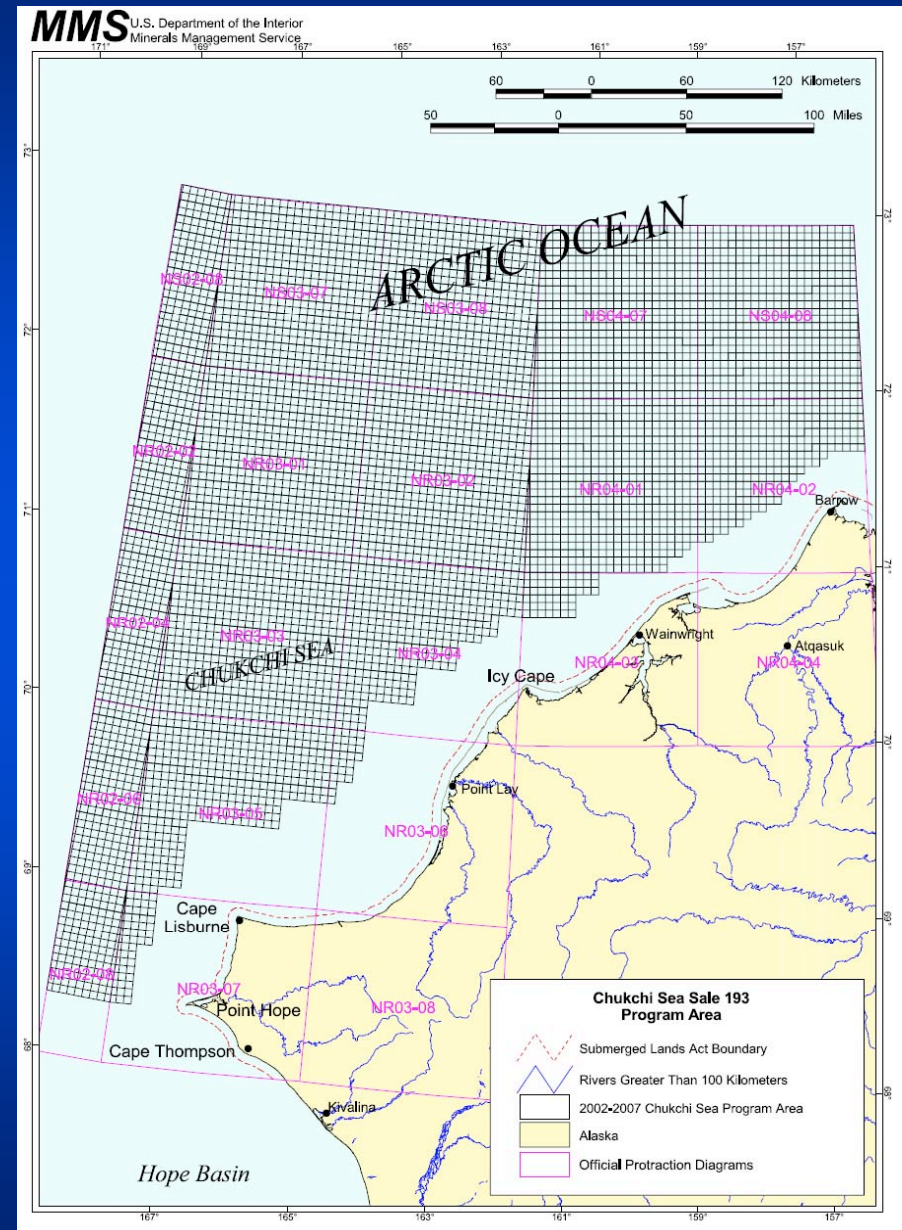
NSB/AEWC/ICAS

- **7 Points**
 - Offshore activities and the bowhead subsistence hunt
 - Conflict Avoidance Agreements and the Good Neighbor Policy
 - Public Input
 - Oil Spill Risk Assessments
 - Cumulative Effects and the NSB Comprehensive Plan
 - Scientific Studies and Peer Review
 - Bowhead Whale Feeding Study
- **MOA – NV Kaktovik**



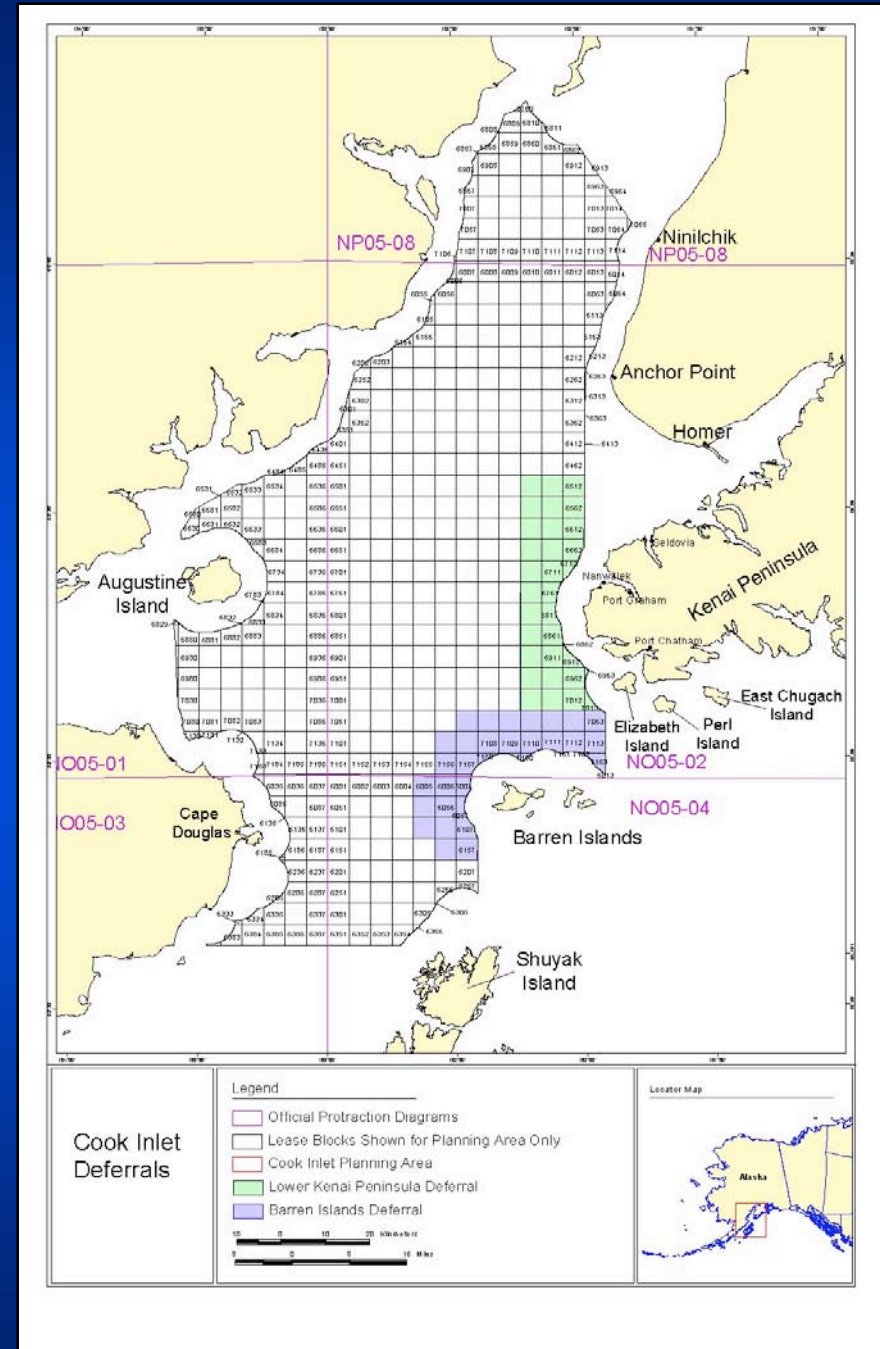
Chukchi Sea Sale 193

- Call in January 2005
 - interest
- NOI for EIS – closed Oct. 31
- Scoping – early 2006
- Sale
 - late 2007 – early 2008
 - Pending 2007-12
 - 5 Year decision



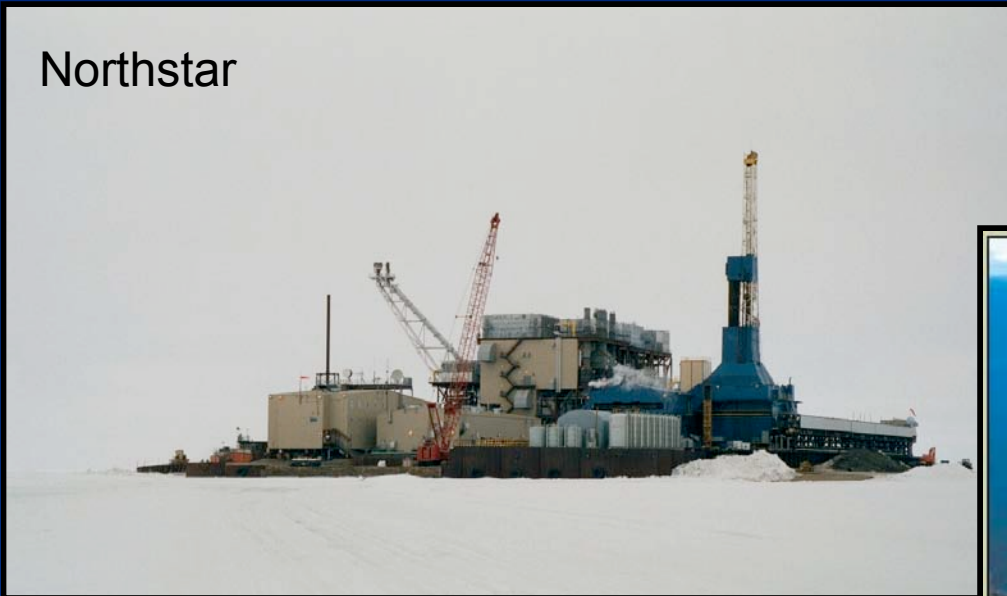
Cook Inlet

- No takers in 2004
- Call this winter
- May 2007 ?



The Present and the Future

Northstar



Cosmopolitan

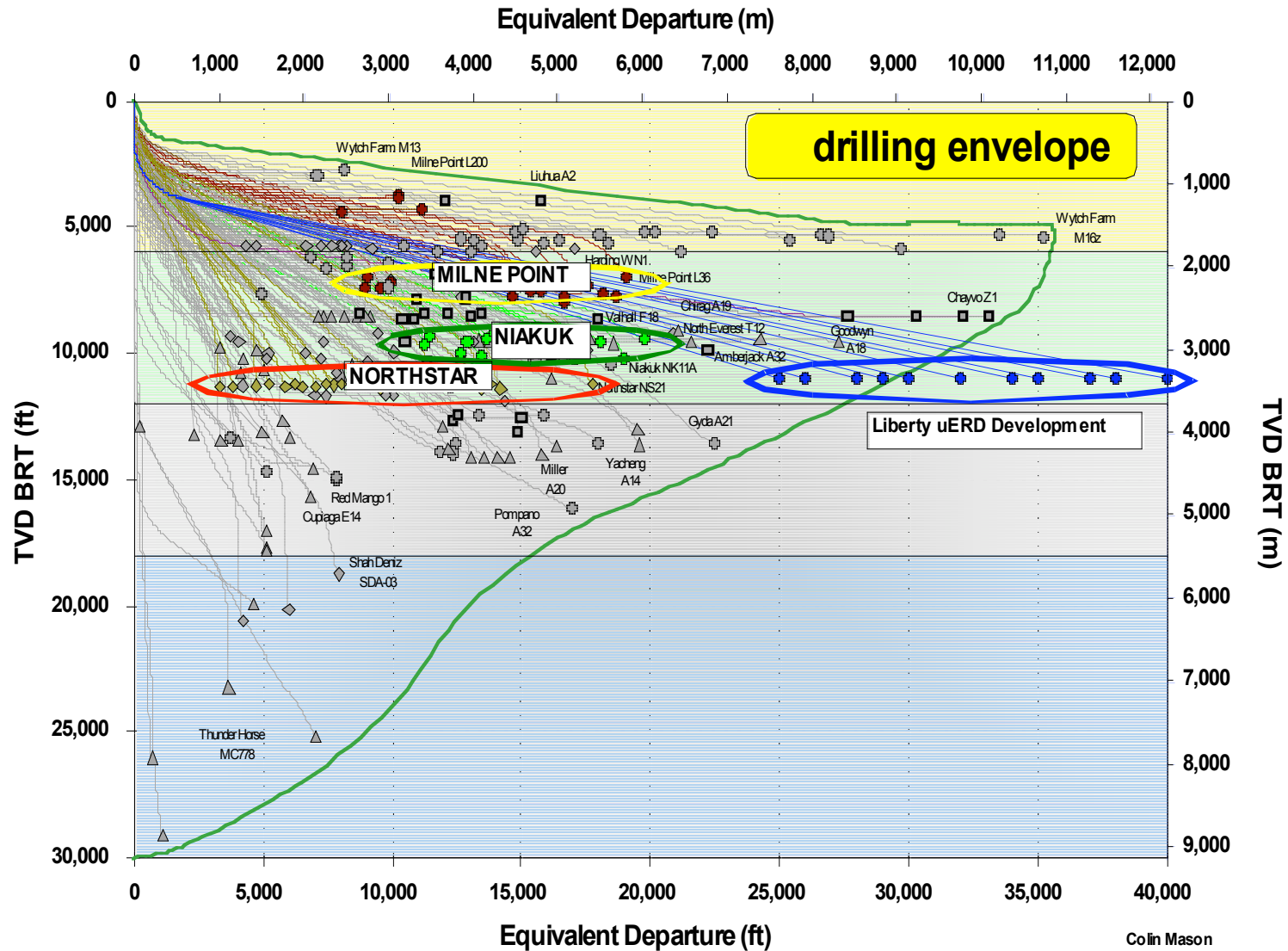


Lin Reid, Eagle Eye Helicopter Inc.

ConocoPhillips Cosmopolitan project; photo taken Sept. 29, 2001.

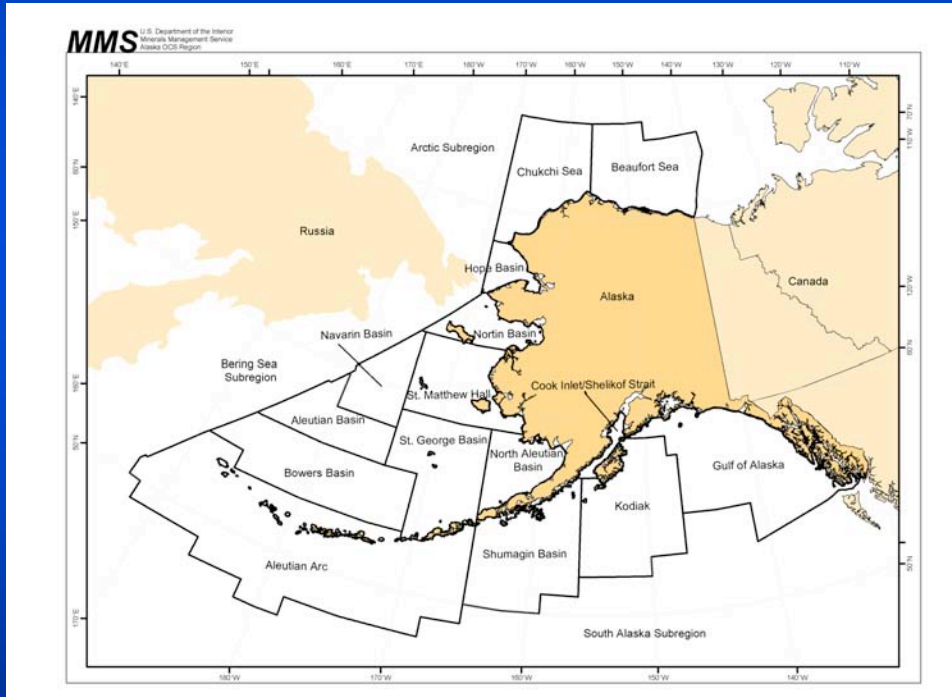


Extended Reach Drilling at Liberty



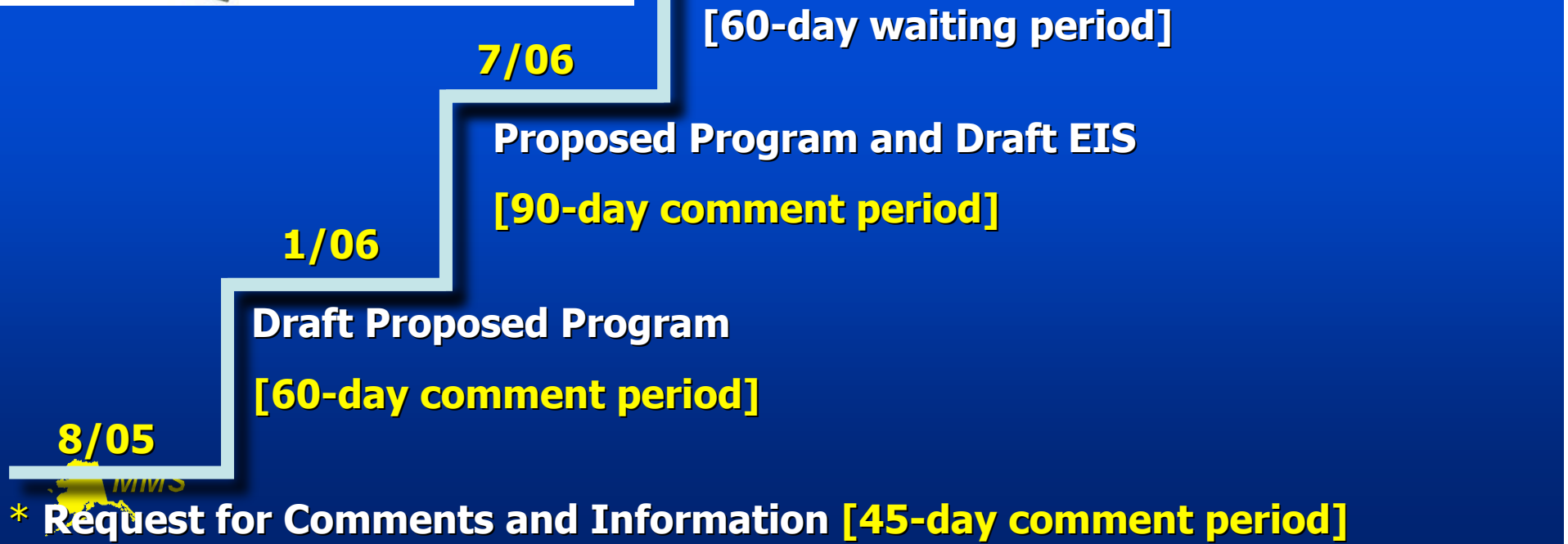
The Future: 2007-12 Five Year Plan

- **Initial step:**
 - Request for Information
 - Comments due Oct. 11
- **What areas to consider for leasing?**
 - Size, timing, and location



- **Moratoria/withdrawal areas**
 - Keep? Modify? Expand?
 - North Aleutian Basin? (Bristol Bay)
- **Gas-only leasing?**
- **Keep “special interest” sales in Alaska?**
- **Drop restricted joint bidding in Alaska?**

Preparation of the OCS Oil and Gas Leasing Program for 2007-2012



Comments

Mail should be sent to:
5-Year Program Manager
381 Elden Street, MS 4010
Herndon, VA 20170

E-mail –

For 5 Year Program:

fiveyrplcomments@mms.gov

for EIS specific: fiveyreiscomments@mms.gov.

Alaska Planning Areas



Alaska Outer Continental
Shelf Region

Alaska Annual Studies Plan
Final FY 2006



MMS U. S. Department of the Interior
Minerals Management Service
Alaska Outer Continental Shelf Region

June 2002

2006 Alaska Region Environmental Studies Plan

Planning begins for 2007

[www.mms.gov/
alaska/ess/essp/sp2006
.pdf](http://www.mms.gov/alaska/ess/essp/sp2006.pdf)



Permitting Initiatives

- **Preparing programmatic Environmental Assessment for seismic activity in the Beaufort and Chukchi Seas.**
- **Updating Arctic Regional Biological Opinion.**
- **30 CFR 250 Subpart B.**
- **Cost recovery rule.**
- **LOA with State ADEC.**
- **ISO Standard on Arctic Structures**



www.mms.gov/alaska

