

**National Petroleum Reserve
Alaska**

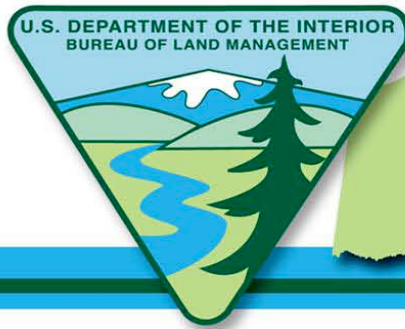
National Petroleum Reserve – Alaska

National Petroleum Reserve Alaska

**Ted Murphy
Alaska BLM Deputy State Director
Division of Resources, Energy and Planning**

September 18, 2008





National Petroleum Reserve Alaska

National Petroleum Reserve – Alaska



The Long Road to NPR-A Energy Development

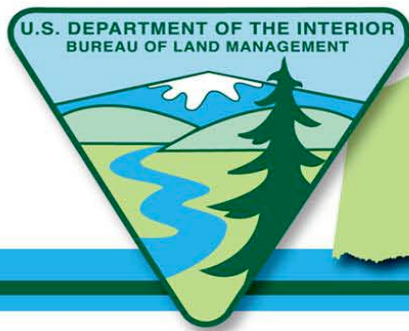


National Petroleum Reserve – Alaska

Established in 1923 by
President Warren G. Harding

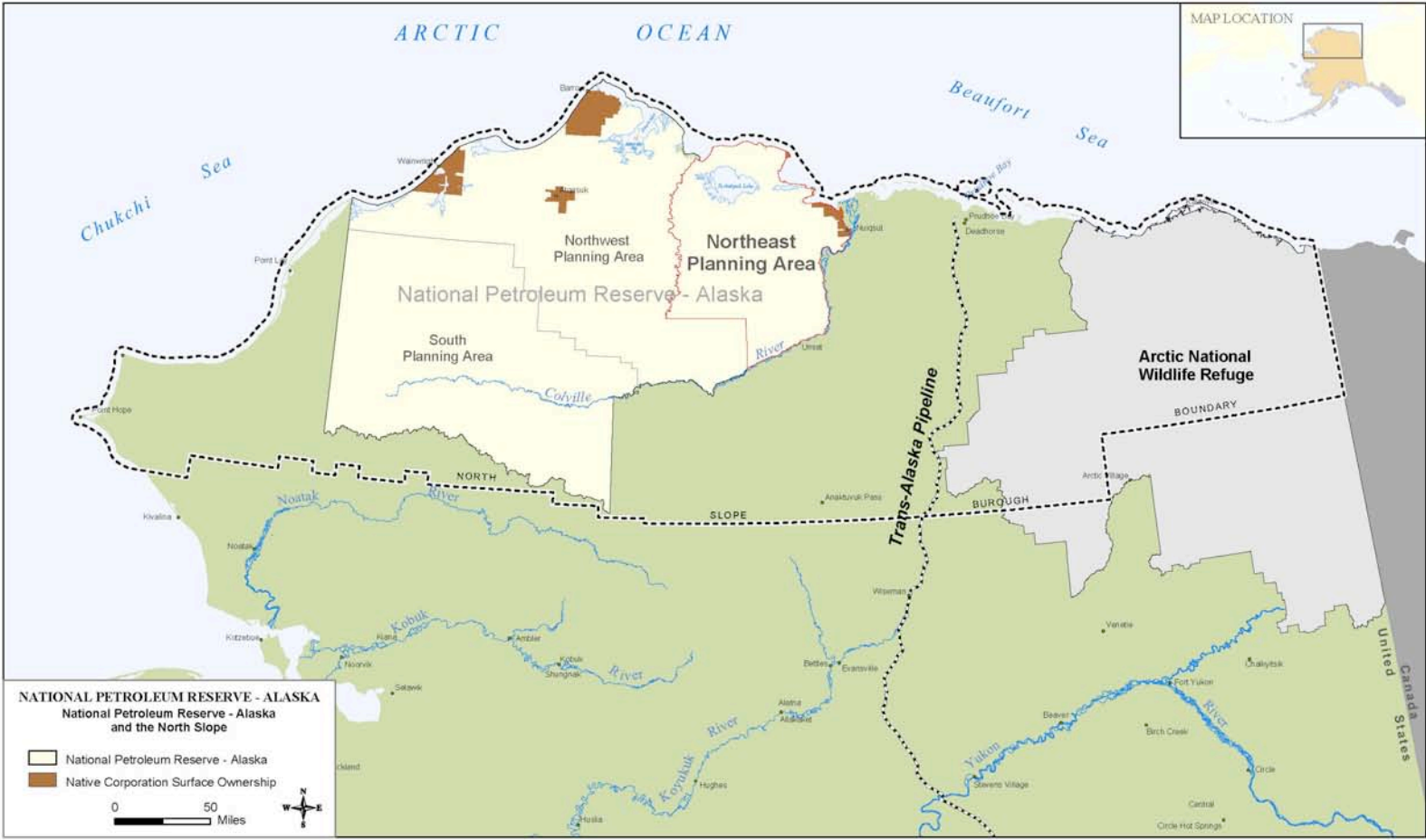
23 million acres

Transfer of administration and
redesignation to NPR-A through the
NPRPA of 1976



National Petroleum Reserve Alaska

National Petroleum Reserve – Alaska





National Petroleum Reserve – Alaska

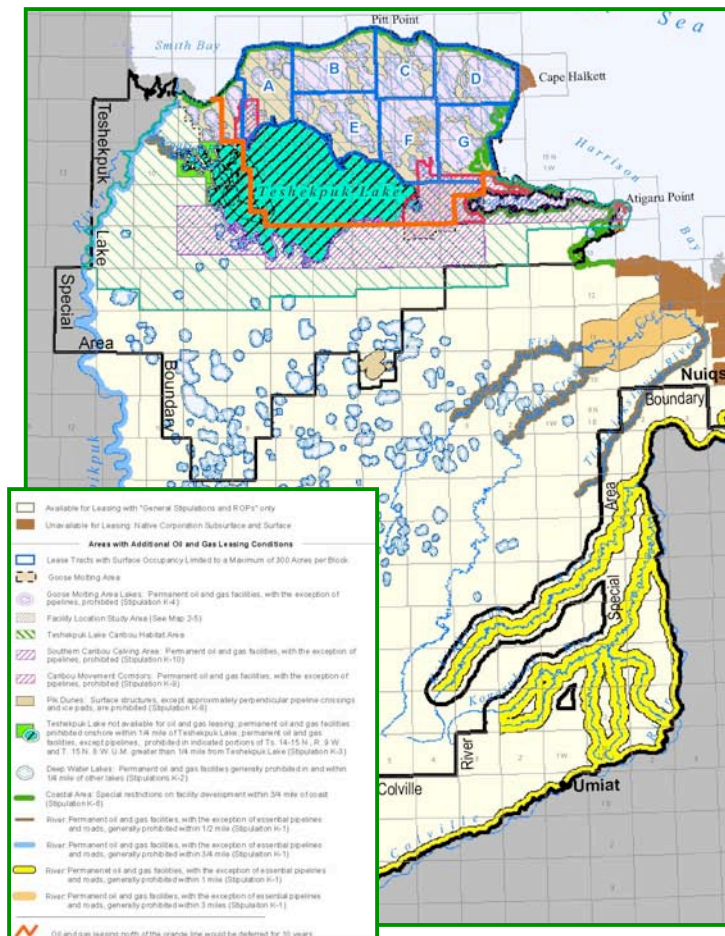
Steps forward since September 2007

- Amended and changed Regulations per Section 347 of the EPAct 2005
- Northeast NPR-A Supplemental Integrated Activity Plan/Environmental Impact Statement and ROD completed
- Colville River Special Management Plan EA completed



Northeast National Petroleum Reserve-Alaska Supplemental IAP/EIS

National Petroleum Reserve – Alaska



Decision

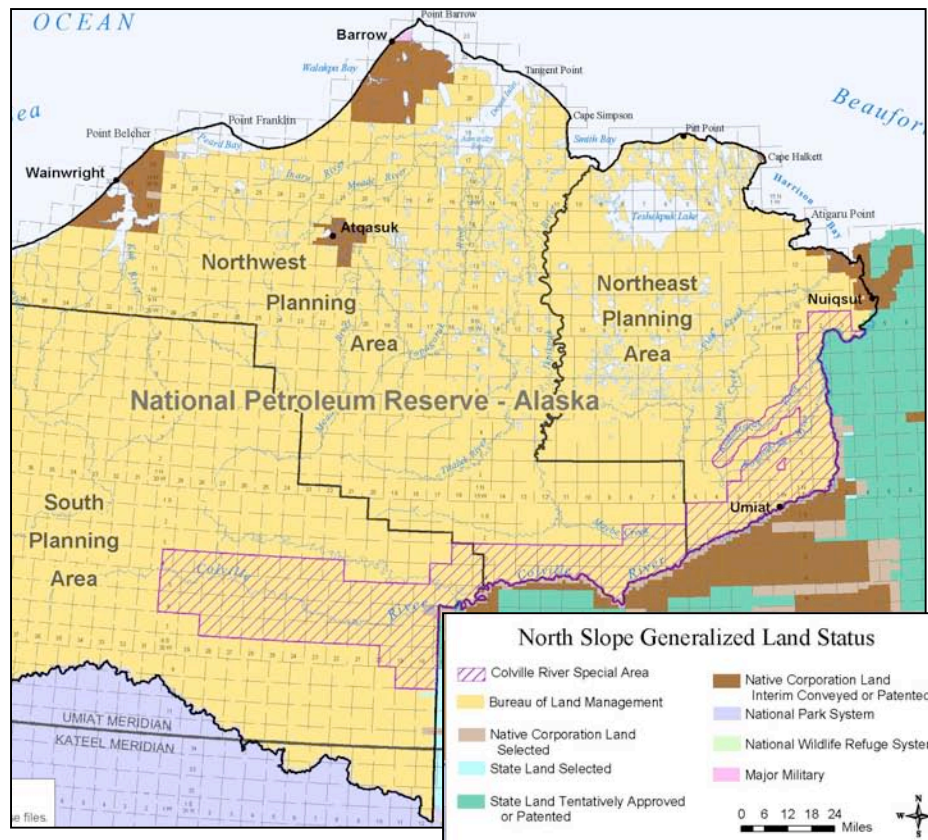
4.4 million acres available for lease;
430,000 acres is deferred for 10 years

Additional protection near Teshekpuk Lake
Performance-based stipulations and ROPs



Colville River Special Area Management Plan

National Petroleum Reserve – Alaska



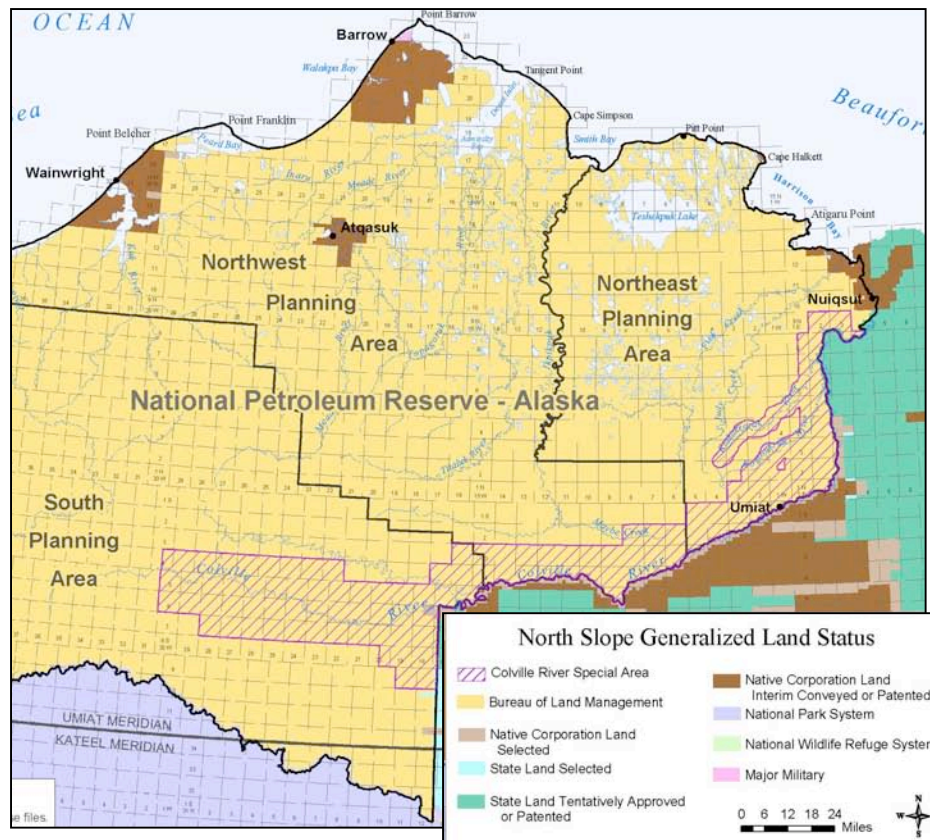
Overview

- Protect Arctic Peregrine falcon
- Consistent with Northeast and Northwest NPR-A plans
- Includes South NPR-A
- Makes no decisions regarding areas to be leased



Colville River Special Area Management Plan

National Petroleum Reserve – Alaska



Specifics

- Prohibit sand and gravel removal from cliffs or undermining cliffs
- Powerline design

April 15 – August 15

- Within 500 m of nest, limit number of visits and forbid campsites
- Within 1 mile of nest, minimize ground vehicle and prohibit non-emergency cleanups

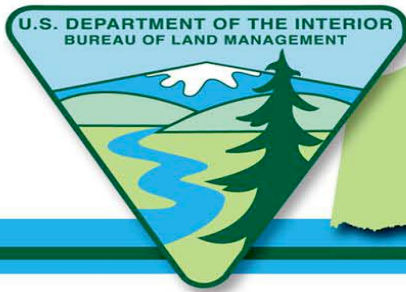


National Petroleum Reserve Alaska

National Petroleum Reserve – Alaska



- Currently Leased
 - NE 959,520 acres leased (154 leases)
 - NW 2.12 million acres leased (181 leases)
- No production Today
- 25 exploratory wells since 2000.
- Seismic exploration on 3.5 million acres since 2000.

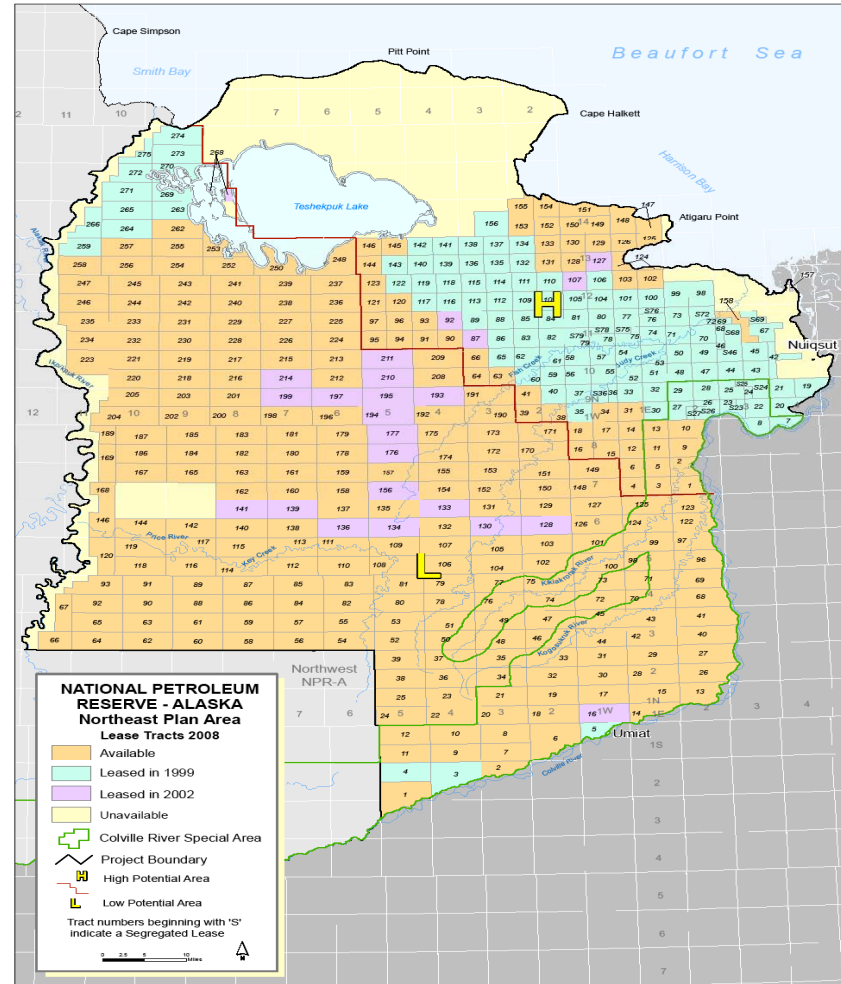


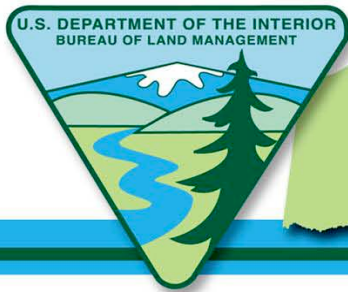
National Petroleum Reserve – Alaska

Northeast NPR-A Lease Offerings

- 2,974,248 Acres
- 280 tracts

EXHIBIT A

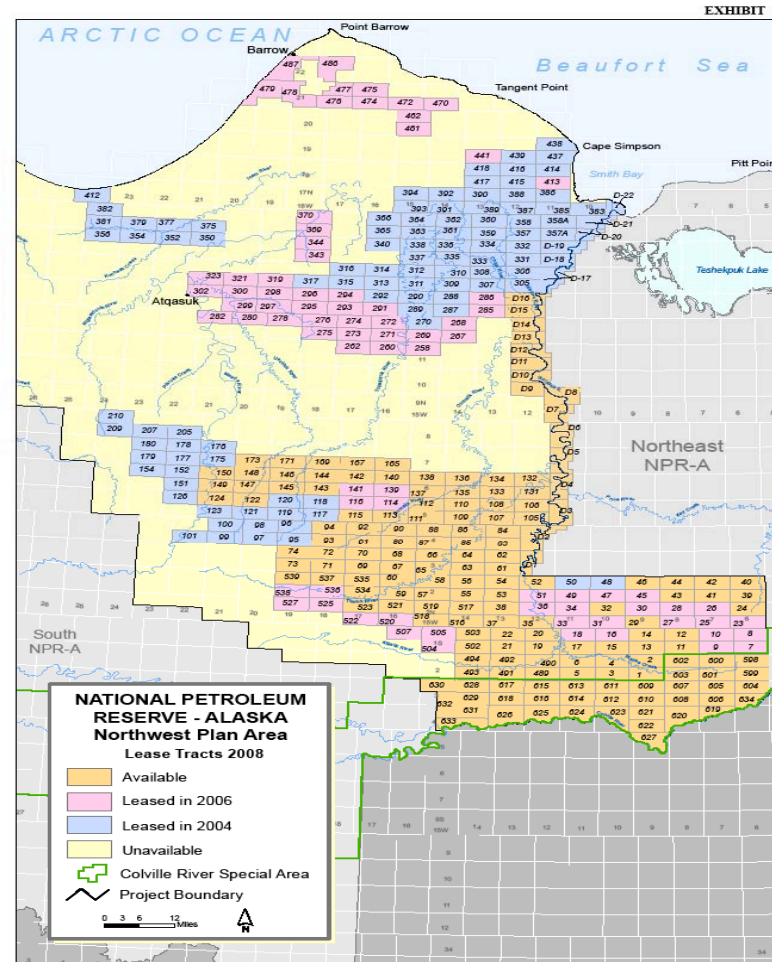


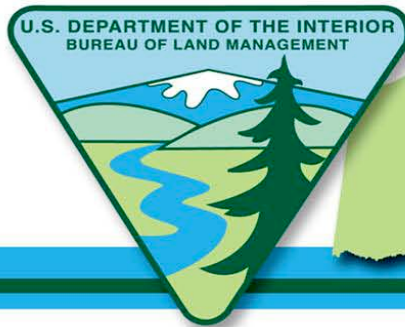


National Petroleum Reserve – Alaska

Northwest NPR-A Lease Offerings

- 1,875,825 Acres
- 170 tracts





National Petroleum Reserve – Alaska

| | High Potential Tracts | Low Potential Tracts |
|--------------------|------------------------------|-------------------------------|
| Tract Size | ¼ township (+/- 5,760 acres) | ½ township (+/- 11,500 acres) |
| Minimum Bid | \$25.00 per acre | \$5.00 per acre |
| Fixed Royalty Rate | 16 2/3 percent | 12 ½ percent |
| Rental Rate | \$5.00 per acre | \$3.00 per acre |

A sunset over the ocean with a bright sun low on the horizon, casting a golden glow across the sky and water. The sky is filled with wispy clouds, and the water is dark blue.

Filing of Bids

*Sealed Bids must be received by
3:45 PM, September 19, 2008*

A sunset over the ocean with a bright sun low on the horizon, casting a golden glow across the sky and water. The sky transitions from a deep orange near the horizon to a dark blue at the top. The water is a dark, calm blue.

September 24th @ 9:00 A.M.

***Location: ZJ Loussac Public
Library, 3600 Denali Street
Anchorage, Alaska***

<http://www.blm.gov/ak/st>