



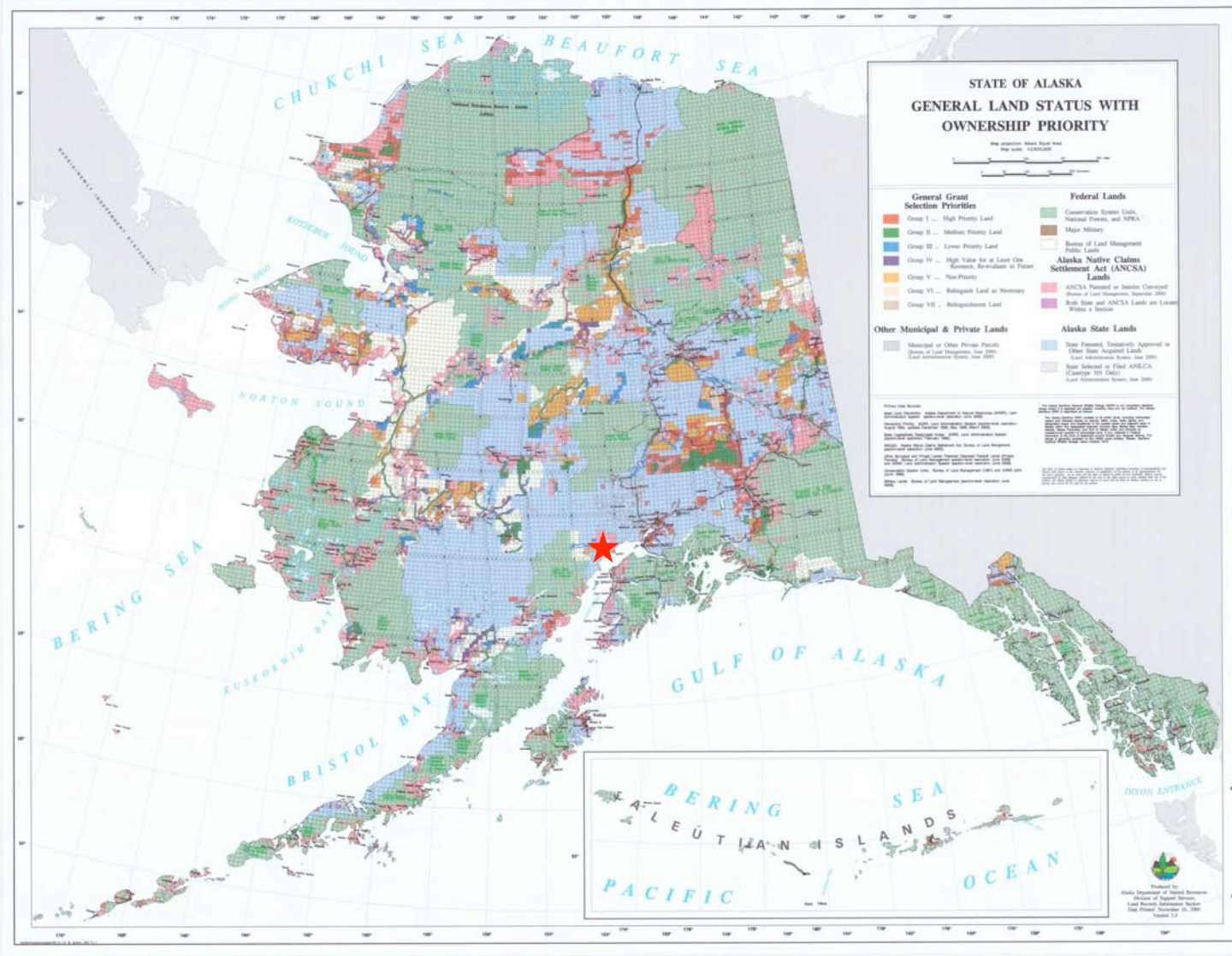
West Cook Inlet: 2008 to 2020

**Tyonek Native Corporation
1689 C Street, Suite 201
Anchorage, Alaska 99501**

December 2008

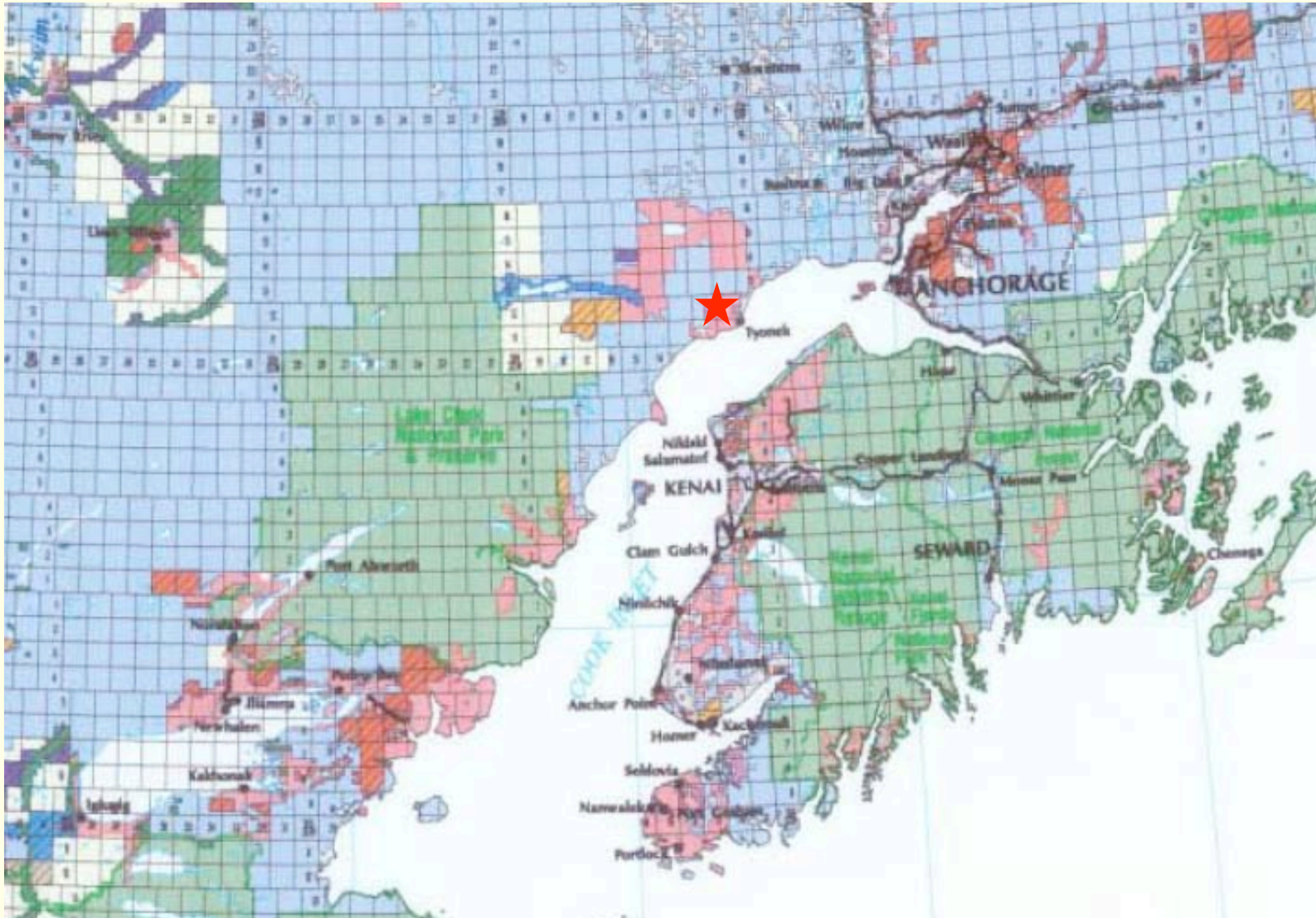


Alaska Land Ownership





South Central Alaska- Cook Inlet





Cook Inlet/ South Central Alaska





2008 Opportunities Review

■	New Community - 'Nakacheba'	150
■	Conservation Easement	20
■	1000-acre Industrial Site	-0-
■	North Foreland Port & Facilities	-0-
■	Aggregate Export	500
■	West Susitna Road Access	100
■	Fast Ferry	100
■	Chuitna Coal 600	
■	Coal to Liquid & Power Generation	12,000
■	Chakachamna Hydropower	1,750
■	Mt. Spurr Geothermal Power	3,000
■	Au Port & Community Development	<u>500</u>
	TOTAL (millions)	<u>\$ 18,720</u>

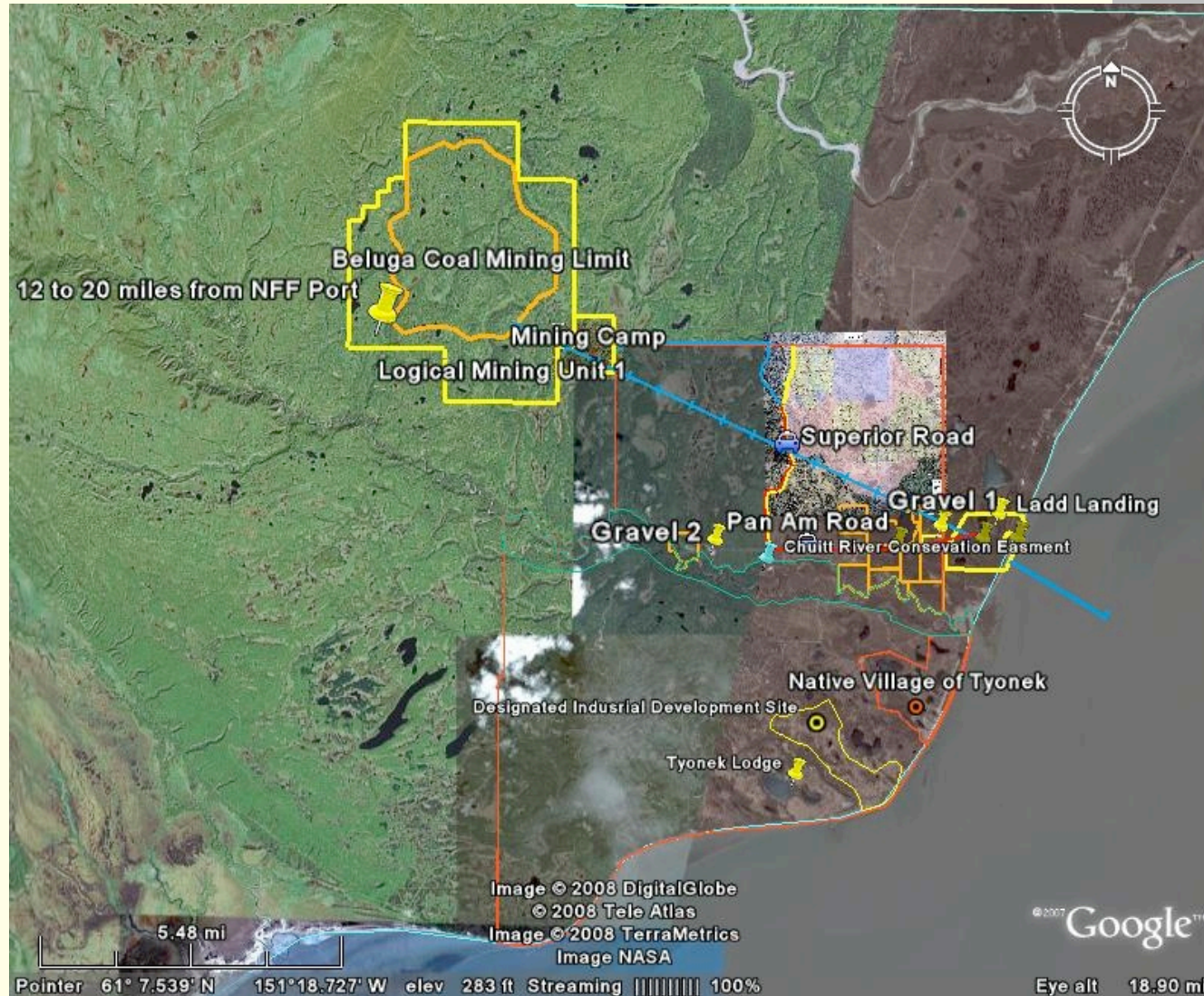


Chuitna Coal

- Second-largest coal strip mine in USA?
- NVT/TNC contracts start 2010 under MOU.
- Potential easements across TNC lands.
- Construction start 2010.
- Estimated 500 construction workers.
- 180-man camp at mine.
- 10,000-foot conveyor to ship load dock.
- Planned 25-year mine life.
- \$600 Million investment.



Chuitna Coal Project

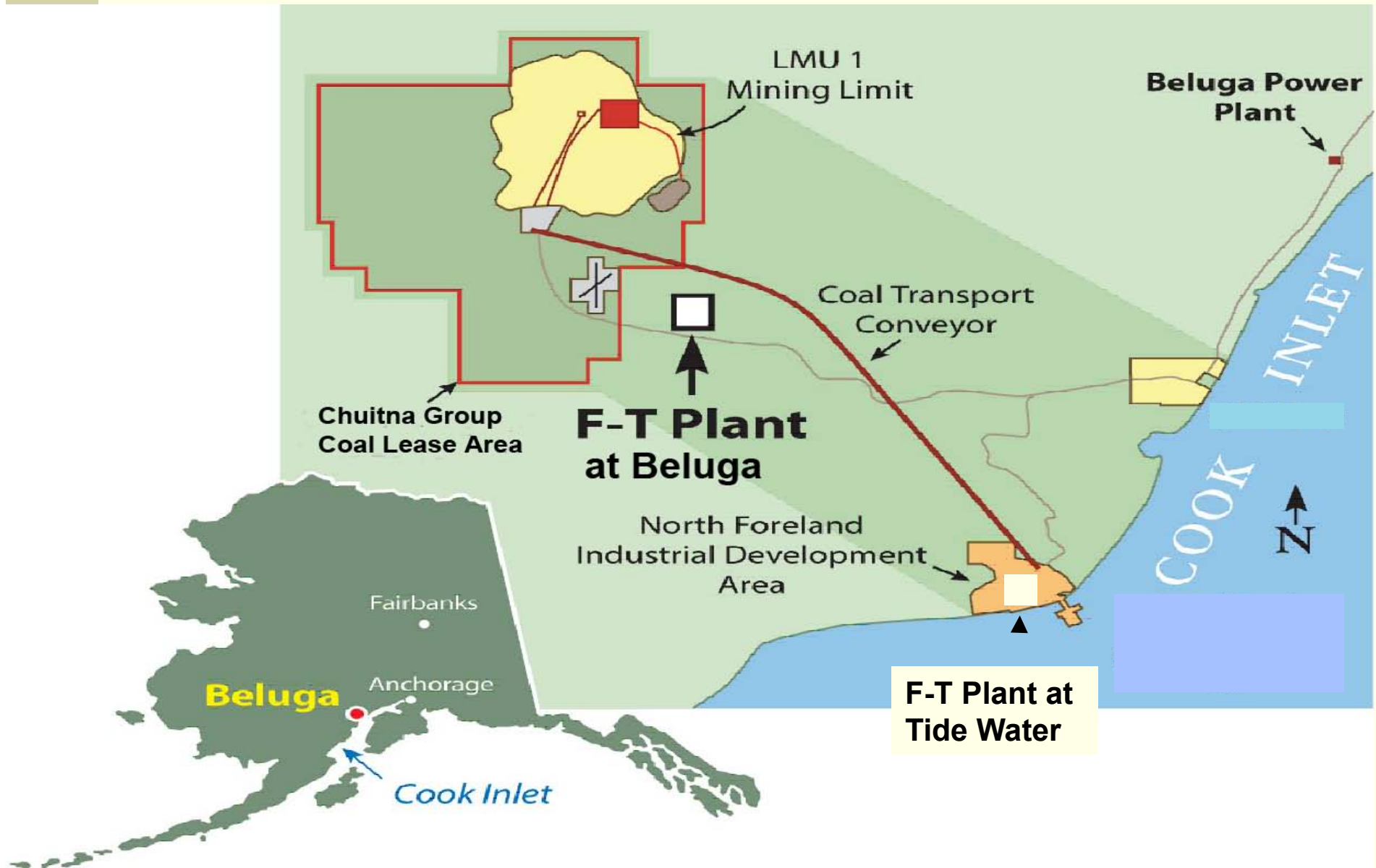




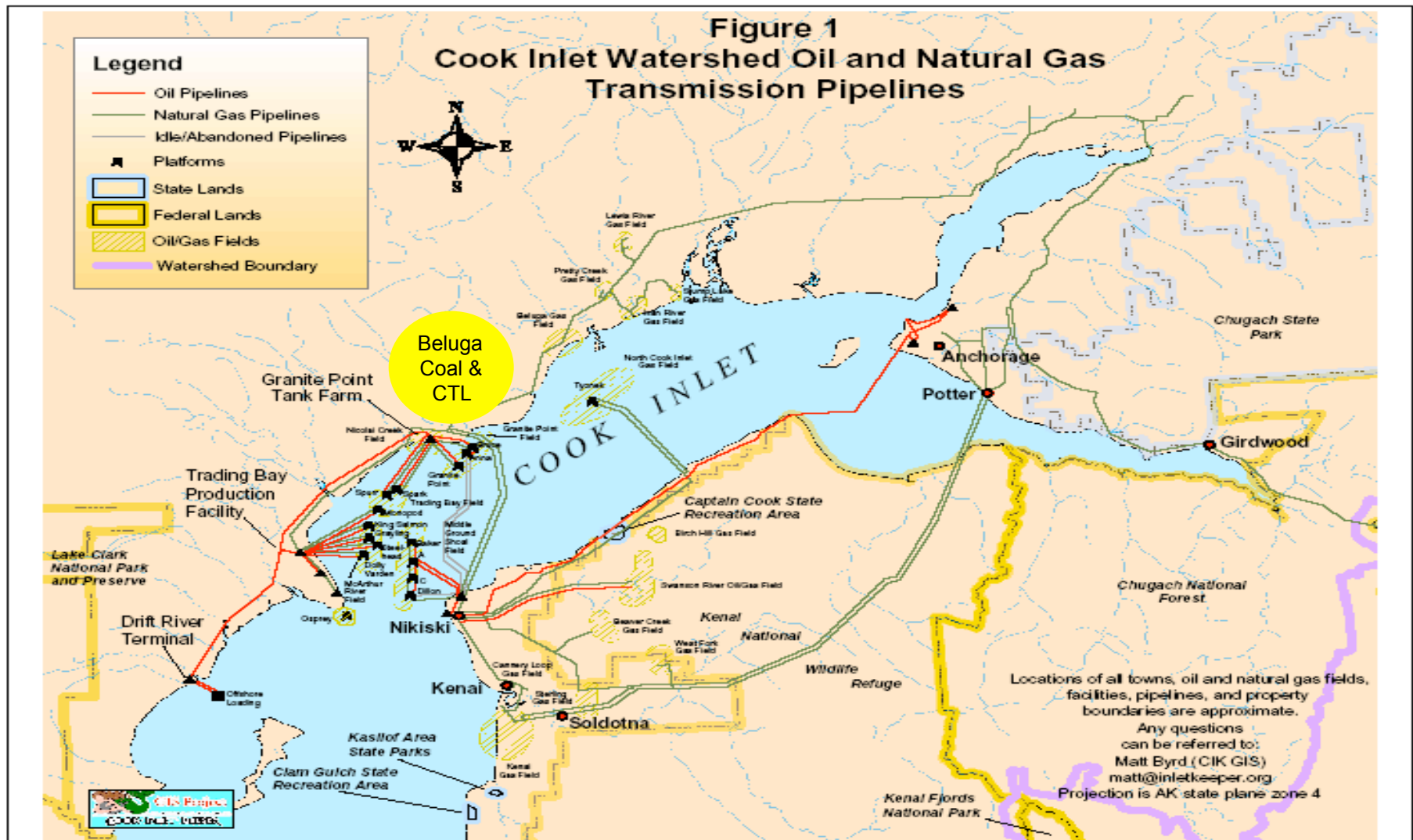
Coal to Liquid

- Coal to gas, then gas to liquid fuel.
- 1,000 acre NFF Port Site.
- 5000 construction workers, 500 staff.
- 80,000bpd F-T fuel for ready markets.
- 400 MW of waste heat power generation.
- Power to Railbelt, resource deposits.
- CO2 sequestration w/EOR.
- \$ 12 Billion Project.
- 8-10 years permitting & construction.
- Project controlled by technology holder.

80,000 bbl/d Coal To Liquids “Beluga CTL Plant” (Mine Mouth or Tide Water)



Cook Inlet Oil & Gas Facilities



Most of the oil and gas production is from the west side of the Cook Inlet plus an inefficient simple cycle 350 MW gas fired power plant due for replacement – all within a few miles of the proposed CTL site

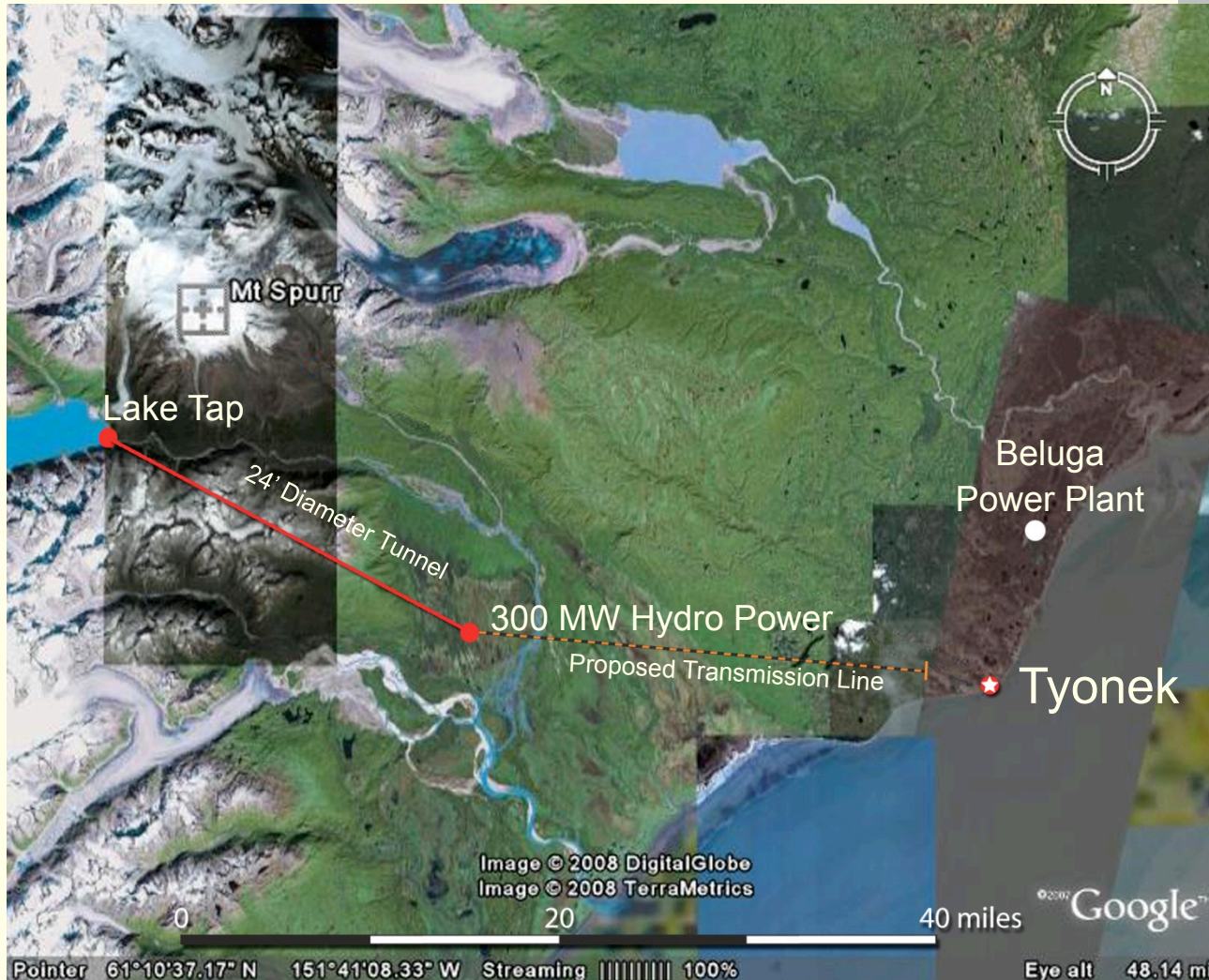


Chakachamna Hydropower

- 300 MW Power for Railbelt.
- 10-mile Tunnel, Minimal Disturbance.
- Seek development partner.
- 3-5 years for studies, permitting.
- 5 years construction, complete 2018
- Estimate 2000 construction workers.
- \$2 Billion project.
- Commit to MOA with TNC.



Chakachamna Hydropower



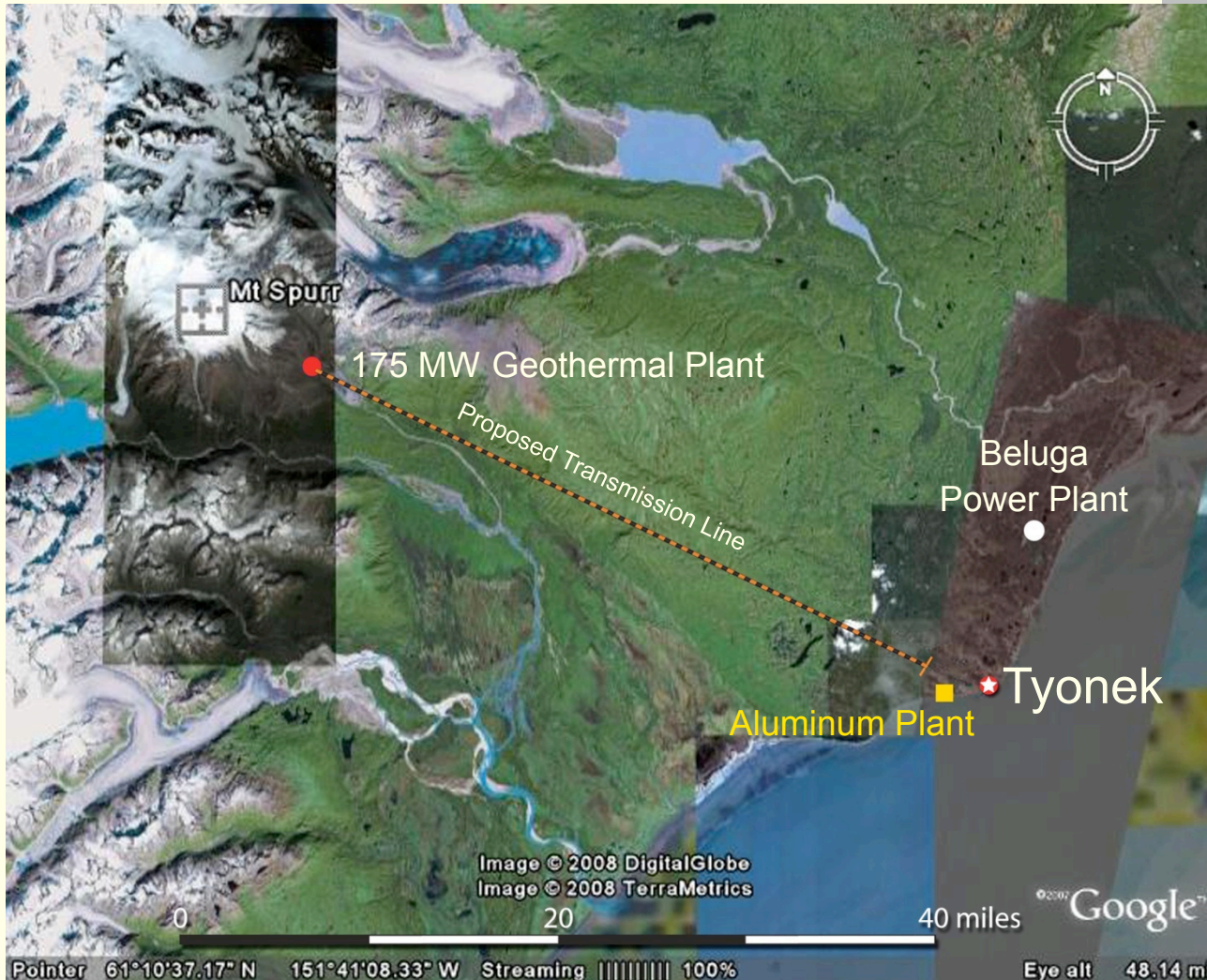


Mt. Spurr Geothermal Power

- ORMAT wins DNR geothermal leases.
- Geothermal exploration starts in '09.
- 50 MW to 175 MW power for railbelt grid.
- Up to 400 MW for aluminum production.
- Estimate 3000 construction workers.
- Estimate 300 operations staff.
- 9-12 years for project completion.
- \$ 3 Billion project.



Mt. Spurr Geothermal Location





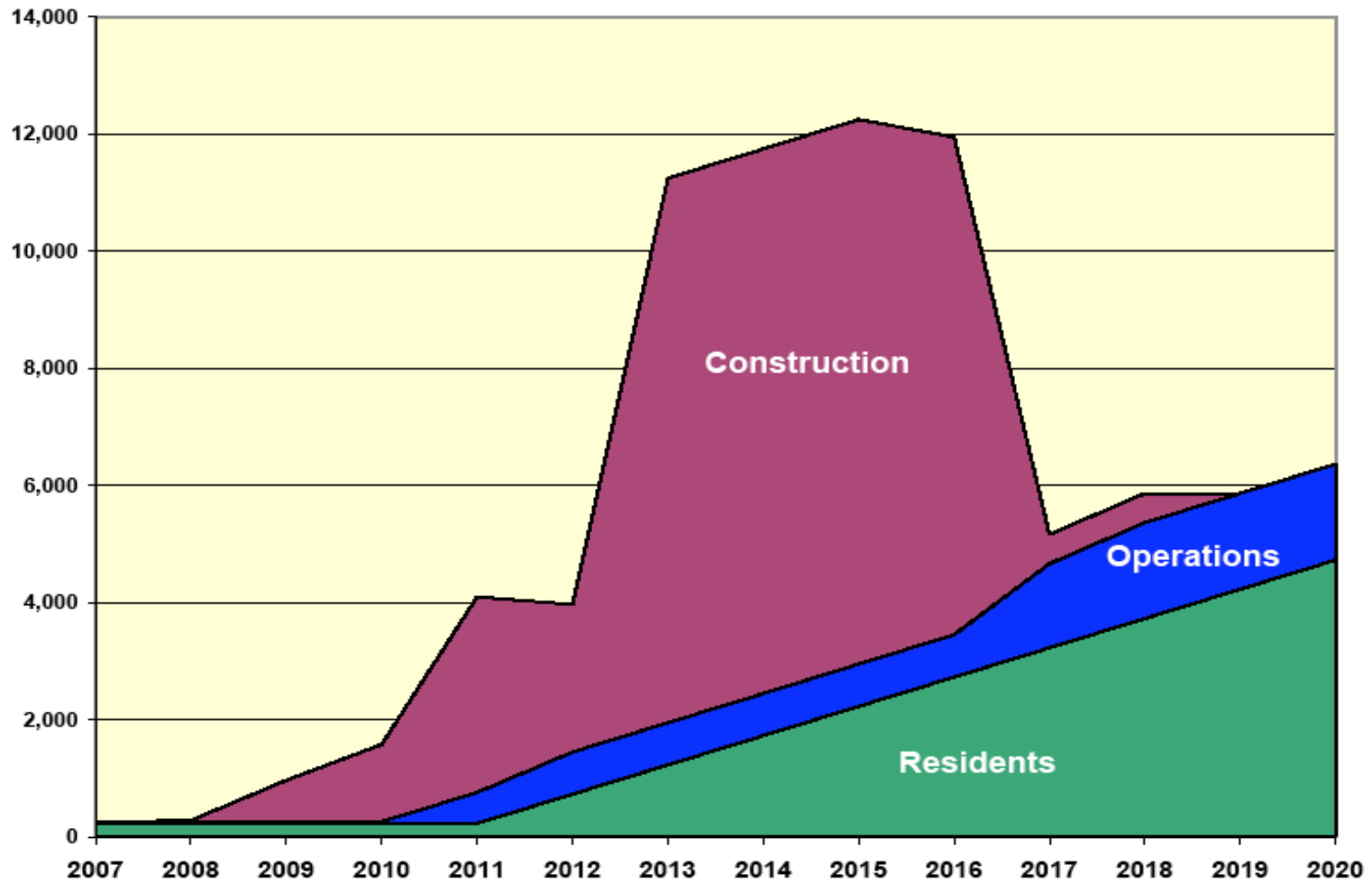
New Ferry to Serve Tyonek in 2010

- Mat-Su Borough targets Tyonek for daily ferry
- Ferry carries equipment & 114 passengers.
- Anchorage to Kenai to Tyonek to Pt. McKenzie
- Huge impact on West Cook Inlet lifestyle.
- Serves industry as well as residents.



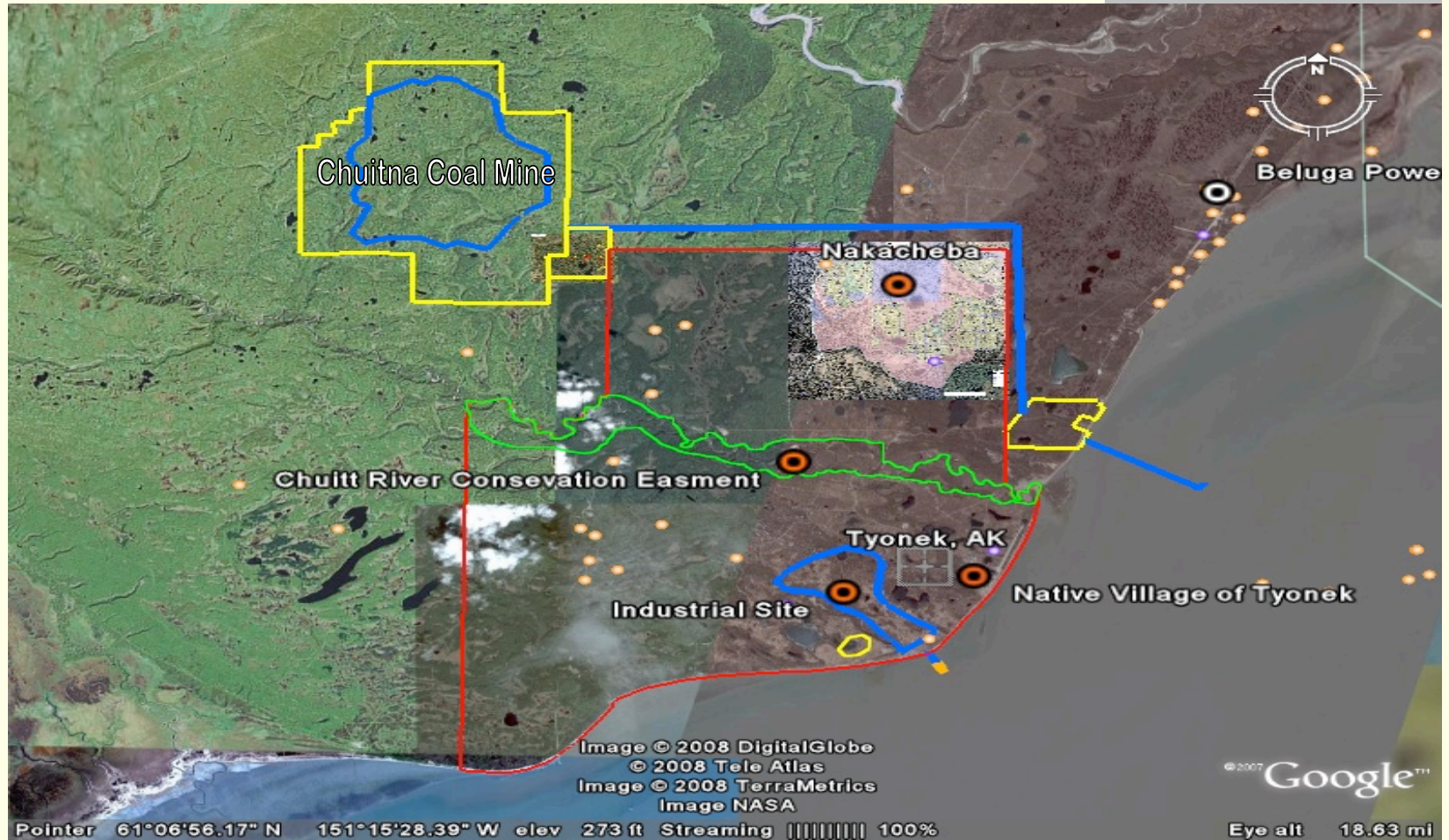


West Cook Inlet Population Projections





Tyonek Area Lands Activity





New Community – “Nakacheba”

- 700 Homesites by TNC in process.
- Basis for new community.
- 5,000 forecasted residents.
- 5,000 forecasted construction jobs
- New highways and seaport links in progress
- Alaska’s newest 21st Century City
- The Alaska City of Nowhere



Conservation Easements

- TNC's considering 2,100 acres of Conservation Easements (CE) on Chuitna with impacts on CIRI's subsurface estate.
- Total Development Impact 6,000 acres.
- TNC intends to transfer easements to NVT.
- Farm Bill provides authority.
- ANCSA Corporations own millions of acres.



1000-acre Industrial Site

- Designated for industrial activities.
- Excellent soils and habitats.
- Surrounded by wildlife preserve.
- Industrial Power & Natural Gas on site.
- Strategically located at North Foreland Port.
- Within 50 miles of multiple power sources.
- Within 70 miles of Alaska Rail Road.
- Within 50 miles of Alaska's largest population.



North Foreland Port & Facilities

- Served Handymax Class ships in 1980's.
- Cape Class requires only 800' extension.
- Construction Camp housing.
- Shop facilities.
- Power & natural gas utilities nearby.
- Several Herc airstrip(s) nearby.
- 1993 AK's most cost effective bulk port site
- Asian and US firms agree.



North Foreland Dock





Aggregate Export

- Aggregate Market at all time highs
- TNC has 100MM to 500 MM Tons inventory
- North Foreland very competitive
- \$20/tonne target reached in market
- Delineation, market studies in 2008
- Royalty, operator, port, delivery & sale revenues all possible
- Low capital requirements as infrastructure in place.



West Susitna Road Link

- Connect west Susitna roads to State system
- 28 miles road alignment, est. \$25 million
- Susitna River bridge, est. \$75 million
- Growing West Cook Inlet population
- \$19 Billion proposed development in area
- Supported by Kenai Peninsula & Mat-Su Boroughs.
- South Central AK has another Kenai 4 hours closer.
- New Ferry Completes South Central Circle

West Susitna Road & Ferry Link 2020



West Susitna Road & Ferry Link



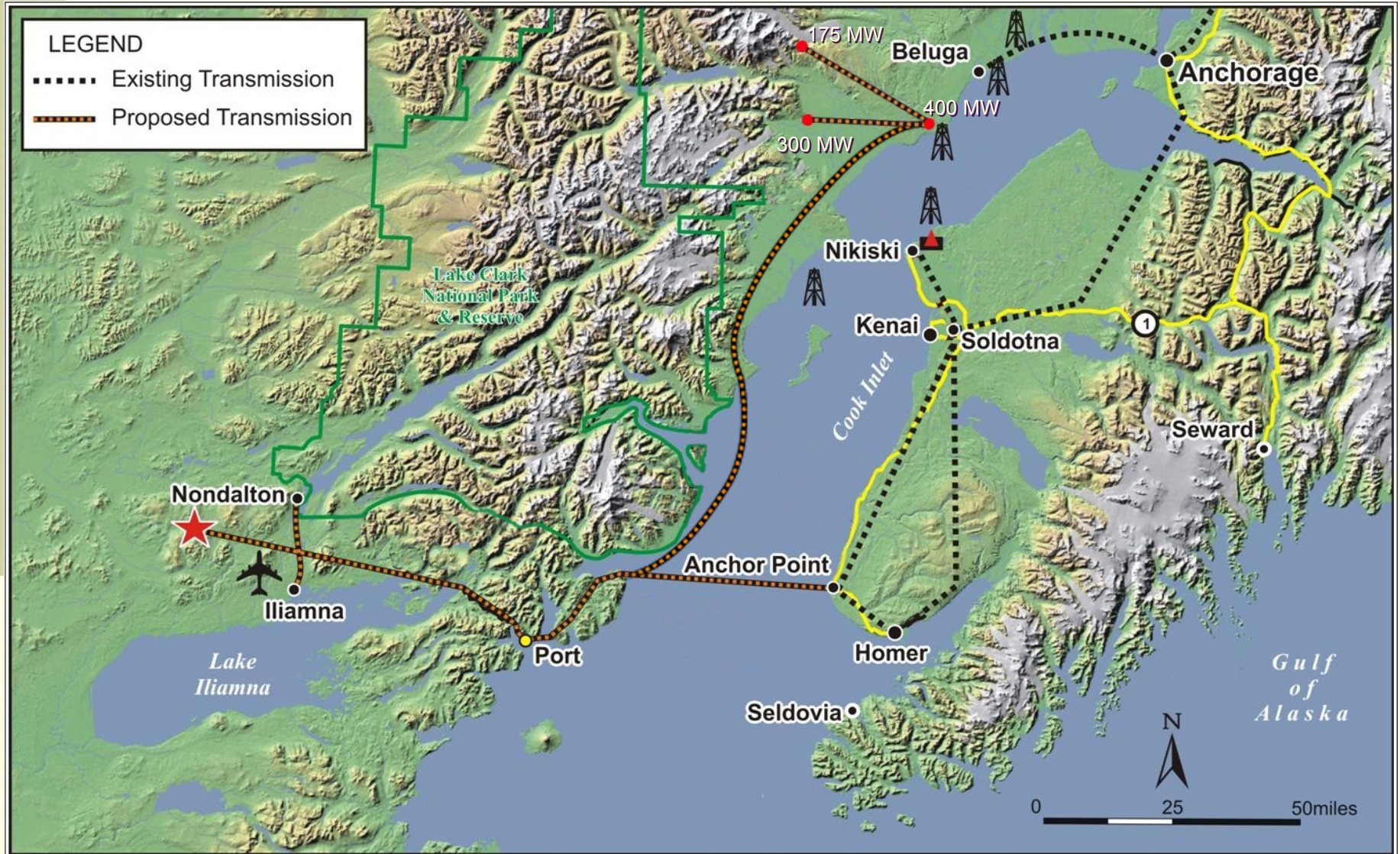


2020 Cook Inlet Power Options

- Total 875 MW Power Potential
- Replace 360MW Beluga Power Plant
- 500 MW Resource Development Power
- Clean Alternative Energies
- Average 4.4 Cents per KWH
- Frees Natural Gas for Heating
- Connect to Naknek Power Grid
- Connect to Homer Electric Grid



2020 Cook Inlet Power Options



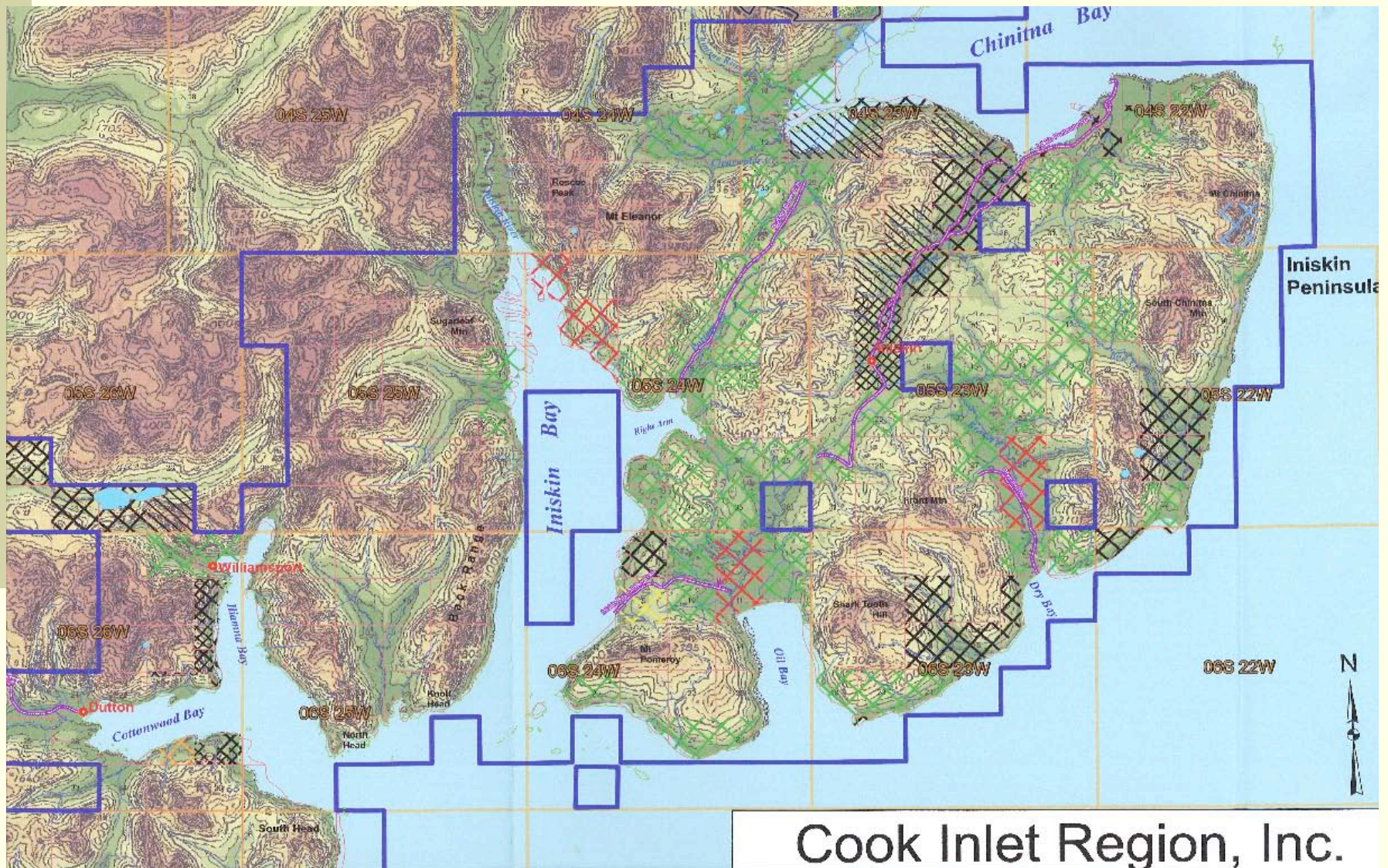


Au Port & Community Development

- Resource Mines Need Deep-Water Port
- Village Corporation Ownership
- Several Mines in Area
- Limestone Mining in Area
- Port Serves Multiple Users
- Multiple Power Options
- New Community Adjacent to Port



Tyonek Gold Port & Development



Cook Inlet Region, Inc.



Questions?

Contact John McClellan at jmcclellan@tyonek.com should you have questions on the information presented herein.